
User Manual for NCD ThinSTAR 532.NET & 564.NET Running Windows

Microsoft® Windows® CE.Net
NCD Software Release 6.0

Hotkey Quick Reference Guide

To...	Press....
Display the Terminal Connection Manager	CTRL + ALT + END
Display the next or previous connection	CTRL + ALT + ↑ or ↓
Display the default connection	CTRL + ALT + HOME
Display the Terminal Properties dialog box ¹	F2 KEY

¹From the Terminal Connection Manager.

FCC regulatory and safety information

FCC regulatory and safety information can be found in the Quick-Start Guide that came with your device, and on the Support section of the NCD website which can be found at:

<http://www.ncd.com/support.html>

CANADA ICES/NMB-003 Class/Classe (B)

This Class B digital apparatus complies with Canadian ICES-003.

Cet appareil numérique de la classe B est conforme à la norme NMB-003 du Canada.

NCD Hardware Warranty

NCD hardware warranties can be found in the Quick-Start Guide that came with your device, and on the Support section of the NCD website which can be found at:

<http://www.ncd.com/support.html>

Microsoft Software License

MICROSOFT[®] WINDOWS[®] CE.Net OPERATING SYSTEM FOR WINDOWS- BASED TERMINAL DEVICES

IMPORTANT—READ CAREFULLY: This End User License Agreement (“EULA”) is a legal agreement between you (either an individual or a single entity) and the manufacturer (“Manufacturer”) of the special purpose computing device (“SYSTEM”) you acquired which includes certain Microsoft software product(s) installed on the SYSTEM and/or included in the SYSTEM package (“SOFTWARE”). The SOFTWARE includes computer software, the associated media, any printed materials, and any “online” or electronic documentation. By installing, copying or otherwise using the SOFTWARE, you agree to be bound by the terms of this EULA. If you do not agree to the terms of this EULA, Manufacturer and Microsoft Licensing, Inc. (“MS”) are unwilling to license the SOFTWARE to you. In such event, you may not use or copy the SOFTWARE, and you should promptly contact Manufacturer for instructions on return of the unused product(s) for a refund.

SOFTWARE LICENSE

The SOFTWARE is protected by copyright laws and international copyright treaties, as well as other intellectual property laws and treaties. The SOFTWARE is licensed, not sold.

1. GRANT OF LICENSE. SOFTWARE includes software already installed on the SYSTEM (“SYSTEM Software”) and, if included in the SYSTEM package, software contained on the CD-ROM disk and/or floppy disk(s) labeled “Desktop Software for Microsoft Windows CE.Net” (“Desktop Software”). This EULA grants you the following rights to the SOFTWARE:

- **SYSTEM Software.** You may use the SYSTEM Software only as installed in the SYSTEM.

-
- **Desktop Software.** Desktop Software might not be included with your SYSTEM. If Desktop Software is included with your SYSTEM, you may install and use the component(s) of the Desktop Software in accordance with the terms of the end user license agreement provided with such component(s). In the absence of a separate end user license agreement for particular component(s) of the Desktop Software, you may install and use only one (1) copy of such component(s) on a single computer with which you use the SYSTEM.
 - **Use of Windows CE.Net Operating System for Windows-Based Terminal Devices with Microsoft Windows NT Server, Terminal Server Edition.** If the SOFTWARE is Windows CE.Net operating system for Windows-Based Terminal devices, the following special provisions apply. In order to use the SYSTEM in connection with Windows NT Server, Terminal Server Edition, you must possess (1) a Client Access License for Windows NT Server, Terminal Server Edition and (2) either an end user license for Windows NT Workstation or a Terminal Services Client Access License (please refer to the end user license agreement for Windows NT Server, Terminal Server Edition for additional information).
 - **Back-up Copy.** If Manufacturer has not included a back-up copy of the SYSTEM Software with the SYSTEM, you may make a single back-up copy of the SYSTEM Software. You may use the back-up copy solely for archival purposes.

2. DESCRIPTION OF OTHER RIGHTS AND LIMITATIONS.

- **Speech/Handwriting Recognition.** If the SYSTEM Software includes speech and/or handwriting recognition component(s), you should understand that speech and handwriting recognition are inherently statistical processes; that recognition errors are inherent in the processes; that it is your responsibility to provide for handling such errors and to monitor the recognition processes and correct any errors. Neither Manufacturer nor its suppliers shall be liable for any damages arising out of errors in the speech and handwriting recognition processes.
- **Limitations on Reverse Engineering, Decompilation and Disassembly.** You may not reverse engineer, decompile, or disassemble the SYSTEM Software, except and only to the extent that such activity is expressly permitted by applicable law notwithstanding this limitation.
- **Single SYSTEM.** The SYSTEM Software is licensed with the SYSTEM as a single integrated product. The SYSTEM Software installed in Read Only Memory (“ROM”) of the SYSTEM may only be used as part of the SYSTEM.
- **Single EULA.** The package for the SYSTEM Software may contain multiple versions of this EULA, such as multiple translations and/or multiple media versions (e.g., in the user documentation and in the software). Even if you receive multiple versions of the EULA, you are licensed to use only one (1) copy of the SYSTEM Software.
- **Rental.** You may not rent or lease the SOFTWARE.
- **Software Transfer.** You may permanently transfer all of your rights under this EULA only as part of a sale or transfer of the SYSTEM, provided you retain no copies, you transfer all of the SOFTWARE (including all component parts, the media, any upgrades or backup copies, this EULA and, if applicable, the Certificate(s) of Authenticity), and the recipient agrees to the terms of this EULA. If the SOFTWARE is an upgrade, any transfer must include all prior versions of the SOFTWARE.
- **Termination.** Without prejudice to any other rights, Manufacturer or MS may terminate this EULA if you fail to comply with the terms and conditions of this EULA. In such event, you must destroy all copies of the SOFTWARE and all of its component parts.

3. UPGRADES AND RECOVERY MEDIA.

- If the SYSTEM Software and this EULA are provided separate from the SYSTEM by Manufacturer and the SYSTEM Software is on a ROM chip, CD ROM disk(s) or floppy disk(s), and labeled “For ROM Upgrade Purposes Only” (“ROM Upgrade”), you may install one copy of the ROM Upgrade onto the SYSTEM as a replacement copy for the SYSTEM Software originally installed on the SYSTEM and use it in accordance with Section 1 of this EULA. You may also install additional copies of the ROM Upgrade as replacement copies onto additional SYSTEMS which are the same brand and model as the SYSTEM and contain a duly licensed copy of the same version and language release of the SOFTWARE (“ADDITIONAL SYSTEMS”), provided that (1) Manufacturer has supplied a corresponding serialized sticker for each additional copy of the ROM Upgrade, and (2) you affix a serialized sticker per Manufacturer’s instructions for each unit of ROM Upgrade you install.

-
- If the SYSTEM SOFTWARE is provided by Manufacturer on separate media and labeled as “Recovery Media”, you may not make a copy of the SOFTWARE as described in Section 1 for archival purposes. Instead, you may use the Recovery Media solely to restore or reinstall the same version and language release of the SOFTWARE as originally installed on the SYSTEM and thereafter use the SOFTWARE as restored or reinstalled in accordance with Section 1 of this EULA. A single unit of Recovery Media may be used by you to restore or reinstall the SOFTWARE on ADDITIONAL SYSTEMS.

4. COPYRIGHT. All title and copyrights in and to the SOFTWARE (including but not limited to any images, photographs, animations, video, audio, music, text and “applets,” incorporated into the SOFTWARE), the accompanying printed materials, and any copies of the SOFTWARE, are owned by MS or its suppliers (including Microsoft Corporation). You may not copy the printed materials accompanying the SOFTWARE. All rights not specifically granted under this EULA are reserved by MS and its suppliers (including Microsoft Corporation).

5. PRODUCT SUPPORT. Product support for the SOFTWARE is not provided by MS, its parent corporation, Microsoft Corporation, or their affiliates or subsidiaries. For product support, please refer to Manufacturer’s support number provided in the documentation for the SYSTEM. Should you have any questions concerning this EULA, or if you desire to contact Manufacturer for any other reason, please refer to the address provided in the documentation for the SYSTEM.

6. EXPORT RESTRICTIONS. You agree that you will not export or re-export the SOFTWARE to any country, person, or entity subject to U.S. export restrictions. You specifically agree not to export or re-export the SOFTWARE: (i) to any country to which the U.S. has embargoed or restricted the export of goods or services, which as of March 1998 include, but are not necessarily limited to Cuba, Iran, Iraq, Libya, North Korea, Sudan and Syria, or to any national of any such country, wherever located, who intends to transmit or transport the products back to such country; (ii) to any person or entity who you know or have reason to know will utilize the SOFTWARE or portion thereof in the design, development or production of nuclear, chemical or biological weapons; or (iii) to any person or entity who has been prohibited from participating in U.S. export transactions by any federal agency of the U.S. government.

If SOFTWARE is labeled “North America Only Version” above, on the Product Identification Card, or on the SOFTWARE packaging or other written materials, then the following applies: The SOFTWARE is intended for distribution only in the United States, its territories and possessions (including Puerto Rico, Guam, and U.S. Virgin Islands) and Canada. Export of the SOFTWARE from the United States is regulated under “EI controls” of the Export Administration Regulations (EAR, 15 CFR 730-744) of the U.S. Commerce Department, Bureau of Export Administration (BXA). A license is required to export the SOFTWARE outside the United States or Canada. You agree that you will not directly or indirectly, export or re-export the SOFTWARE (or portions thereof) to any country, other than Canada, or to any person or entity subject to U.S. export restrictions without first obtaining a Commerce Department export license. You warrant and represent that neither the BXA nor any other U.S. federal agency has suspended, revoked or denied your export privileges.

7. NOTE ON JAVA SUPPORT. The SYSTEM Software may contain support for programs written in Java. Java technology is not fault tolerant and is not designed, manufactured, or intended for use or resale as on-line control equipment in hazardous environments requiring fail-safe performance, such as in the operation of nuclear facilities, aircraft navigation or communication systems, air traffic control, direct life support machines, or weapons systems, in which the failure of Java technology could lead directly to death, personal injury, or severe physical or environmental damage.

8. LIMITED WARRANTY.

- **Limited Warranty.** Manufacturer warrants that the SOFTWARE will perform substantially in accordance with the accompanying written materials for a period of ninety (90) days from the date of receipt. Any implied warranties on the SOFTWARE are limited to ninety (90) days. Some states/jurisdictions do not allow limitations on duration of an implied warranty, so the above limitation may not apply to you.
- **Customer Remedies.** Manufacturer’s and its suppliers’ entire liability and your exclusive remedy shall be, at Manufacturer’s option, either (a) return of the price paid, or (b) repair or replacement of the SOFTWARE that does not meet the above Limited Warranty and which is returned to Manufacturer with a copy of your receipt. This Limited Warranty is void if failure of the SOFTWARE has resulted from accident, abuse, or misapplication. Any replacement SOFTWARE will be warranted for the remainder of the original warranty period or thirty (30) days, whichever is longer.

-
- **No Other Warranties.** EXCEPT AS EXPRESSLY PROVIDED IN THE LIMITED WARRANTY SECTION ABOVE, THE SOFTWARE IS PROVIDED TO THE END USER “AS IS” WITHOUT WARRANTY OF ANY KIND, EITHER EXPRESSED OR IMPLIED, INCLUDING, BUT NOT LIMITED TO, WARRANTIES OF NON-INFRINGEMENT, MERCHANTABILITY, AND/OR FITNESS FOR A PARTICULAR PURPOSE. THE ENTIRE RISK OF THE QUALITY AND PERFORMANCE OF THE SOFTWARE IS WITH YOU.
 - **No Liability for Consequential Damages.** MANUFACTURER OR MANUFACTURER’S SUPPLIERS, INCLUDING MS AND ITS SUPPLIERS, SHALL NOT BE HELD TO ANY LIABILITY FOR ANY DAMAGES SUFFERED OR INCURRED BY THE END USER (INCLUDING, BUT NOT LIMITED TO, GENERAL, SPECIAL, CONSEQUENTIAL OR INCIDENTAL DAMAGES INCLUDING DAMAGES FOR LOSS OF BUSINESS PROFITS, BUSINESS INTERRUPTION, LOSS OF BUSINESS INFORMATION AND THE LIKE), ARISING FROM OR IN CONNECTION WITH THE DELIVERY, USE OR PERFORMANCE OF THE SOFTWARE.

If you acquired this EULA in the United States, this EULA is governed by the laws of the State of Washington. If you acquired this EULA in Canada, this EULA is governed by the laws of the Province of Ontario, Canada. Each of the parties hereto irrevocably attorns to the jurisdiction of the courts of the Province of Ontario and further agrees to commence any litigation which may arise hereunder in the courts located in the Judicial District of York, Province of Ontario.

If this EULA was acquired outside the United States, then local law may apply. Should you have any questions concerning this EULA, please contact the Manufacturer of your SYSTEM.

U.S. GOVERNMENT RESTRICTED RIGHTS

The SOFTWARE and documentation are provided with RESTRICTED RIGHTS. Use, duplication, or disclosure by the Government is subject to restrictions as set forth in subparagraph (c)(1)(ii) of the Rights in Technical Data and Computer Software clause at DFARS 252.227-7013 or subparagraphs (c)(1) and (2) of the Commercial Computer Software—Restricted Rights at 48 CFR 52.227-19, as applicable. Manufacturer is Microsoft Corporation/One Microsoft Way/Redmond, WA 98052-6399.

Safety Instructions

Please read these safety instruction carefully and keep this user's manual for later reference.

1. Before removing the outer case from the device always disconnect the AC power cord to prevent the possibility of dangerous electrical shock.
2. Before cleaning, disconnect the device from AC power. Do not use liquid or sprayed cleaning products to clean the unit. Instead, use a moistened sheet or cloth for cleaning.
3. Be sure not to expose the device to excessive humidity.
4. Be sure to install the device on a secure surface. A falling device could cause injury.
5. Place the power cord in such a way to avoid people stepping on it. Do not place anything over the power cord.
6. Be sure to note all cautions and warnings on the device.
7. If the device is not used for a long period of time, disconnect the AC power to avoid damage caused by voltage transients.
8. Never pour any liquid into any device openings: This could cause fire or electrical shock.
9. If one of the following situation occurs, be sure to get the device checked by a qualified service technician:
 - a. The power cord or plug is damaged.
 - b. Liquid penetrates the device case.
 - c. The device is exposed to moisture.
 - d. The device does not work well or you cannot get it to work according to the user's manual.
 - e. The device has been dropped or damaged.
 - f. If the device has obvious signs of breakage.
10. The device should be stored and used only in temperature and humidity controlled environments. Storing devices below -20°C (-4°F) or above 60°C (140°F) may cause damage.
11. The sound pressure level at the operators position according to IEC 704-1:1982 is equal or less to 70dB(A).
12. The input power cord shall be minimum H05VV-F, 3G, 0.75mm^2 , rate minimum 6A.
13. The device should be used only where ambient air temperatures are maintained below 40°C .

Table of Contents

FCC regulatory and safety information	ii
CANADA ICES/NMB-003 Class/Classe (B)	ii
NCD Hardware Warranty	ii
Microsoft Software License	ii
Safety Instructions	vi

Introduction 1

Overview	1
Purpose and intended readers	1
Organization	1
What is a ThinSTAR?	1
Getting More Information	2
The Internet	2
Technical support	2

CHAPTER 1 ***Setting Up the NCD ThinSTAR*** 3

Unpacking the ThinSTAR	3
Packaging contents	3
ThinSTAR	3
Monitor	3
Connecting the Components	4

Back panel connectors **4**
Connecting the cables **4**
Connecting peripheral devices **6**
Using the Front Panel **7**
 ThinSTAR Front Panel **7**
Arranging Your Work Area **9**
 Getting comfortable **9**

CHAPTER 2 *Configuring the ThinSTAR* 11

Automatic ThinSTAR Properties Configuration **11**
 Automatic ThinSTAR Properties Configuration **11**
Selecting the Initial Configurations **11**
 Before you begin **11**
 Using the Setup wizard **12**

CHAPTER 3 *Creating Connections* 17

Automatic Terminal Connection Configuration **17**
 Automatic Terminal Connection Configuration **17**
NCD Connection Manager **17**
 Adding a connection **18**
 Editing a connection **19**
 Deleting a connection **19**
 Connection Startup **20**
Creating an RDP connection **20**
Creating an ICA connection **23**
 Use Printer Configuration Utility 27
 Compress Data Streams 27
 Enable Sound 27
 SpeedScreen 28
 Encryption Level 28
Creating a PPP/RAS dialup connection **28**
Creating a Pericom Terminal Emulation Connection **30**

Table of Contents

CHAPTER 4 *Using Connections* 39

- Using Connections 39
 - Starting a connection 39
 - Single Button Connection Manager 40
 - Selecting startup options 40
 - Switching connections 41
 - Cutting and pasting between connections 41
 - Editing and deleting connections 41
 - Printing over the network 42
 - Printing Locally 42
 - Setting Up Local Printing in an RDP Session 42
 - Local Printing in an ICA Session 42
 - Closing connections 42
 - Using a Pericom Terminal Emulation connection 43

CHAPTER 5 *Changing ThinSTAR Properties* 45

- Changing Configurations 45
 - Understanding ThinSTAR properties 45
 - Accessing the ThinSTAR Properties dialog box 45
- The General tab 46
 - Appliance Name 46
- The Display tab 47
- The Network tab 48
- Control Panel tab 50
 - Volume and Sounds 50
 - Date / Time 51
 - Internet Options 51
 - RDP Printers 52
 - ThinPrint® 53
 - TCP Print 54
 - LPD Print 54
 - Global RDP Settings 55
 - Connection Manager 56

57
Security **57**
Mouse Settings **58**
Keyboard Settings **58**
Touch Screen **59**
NCD Update Setting **60**
The Inventory tab **60**
Changing the Global ICA Client Settings **61**
 Hotkeys tab **61**
 Preferences tab **62**
 Server Location tab **63**
 Firewall Settings tab **63**
 PNLite tab **64**

Appendix 5 *Using LPR/LPD Printing* 67
Network printing using LPR/LPD **67**
Configuring the ThinSTAR for LPR/LPD printing **68**
Windows 2000 LPR/LPD printing to the ThinSTAR **69**
Windows NT 4 LPR/LPD printing to the ThinSTAR **69**
Linux/UNIX LPR/LPD printing to the ThinSTAR **70**
Frequently observed issues **71**
 Don't use punctuation **71**
 "Printer name" really means Queue Name **71**

***Index* 73**

Introduction

This introduction describes the purpose and structure of this manual, as well as other sources of information.

Overview

Purpose and intended readers

This manual explains how to use NCD ThinSTAR terminals that are powered by NCD Software incorporating the Microsoft® Windows® CE.Net operating system. It's intended primarily for end users, though administrators, evaluators, and others will find it helpful, too.

Organization

We recommend that you read the chapters of this manual in order. The main topics covered are:

- Unpacking and setting up the ThinSTAR.
- Configuring the ThinSTAR for the network.
- Connecting to one or more servers.
- Changing the properties of the ThinSTAR.

This manual doesn't explain how to use the Windows desktop or Windows-based applications. To learn how to use them, read their documentation.

What is a ThinSTAR?

ThinSTARs are thin client terminals that allow you to access applications running on Microsoft Windows application servers, as well as applications running on UNIX/Linux servers, midrange,

and mainframe computers, and on the Internet/intranet. Compared to personal computers, ThinSTARs are simple devices, since most of the computing is done by the servers.

ThinSTARS can connect to servers running Microsoft Windows 2000 Server (as well as Advanced Server and Datacenter Server versions), Microsoft Windows NT 4 Server, Terminal Server Edition (TSE), and to servers that are running Citrix MetaFrame®, WinFrame®, or Citrix Device Services (CDS). Using the Pericom terminal emulation suite, you can also connect to mainframes and minicomputers. Plus, you can connect printers, modems, bar code scanners, and other peripheral devices a ThinSTAR. Some models of ThinSTAR include Microsoft Internet Explorer Web browser for viewing and printing HTML Web pages.

Getting More Information

The Internet

Current and archival information about NCD products, including the latest software updates, is available at:

<http://www.ncd.com>

In addition, this user manual and other NCD documentation are available at the NCD Web site for browsing or downloading.

Technical support

For technical support regarding NCD products, call NCD at 1-800-800-9599 or send an e-mail message to support@ncd.com.

CHAPTER 1

Setting Up the NCD ThinSTAR

This chapter describes setting up the ThinSTAR.

Unpacking the ThinSTAR

Packaging contents

The ThinSTAR is shipped in cartons, containing these items. Depending on the shipping configuration, one or more of the items may be contained in separate shipping cartons (such as a monitor, keyboard, and mouse):

ThinSTAR

- A mouse with cable attached.
- A power cable.
- A Quick-Start Guide

Monitor

- A monitor power cable (attached to some monitors).
- A monitor video cable (attached to most monitors).
- A tilt/swivel base, attached or unattached.

To unpack the ThinSTAR, open the cartons, remove the components, and save the packing materials in case you need to repack them.

Connecting the Components

Back panel connectors

The diagrams on the following page below show the back panel of the ThinSTAR.

NOTE

The serial and parallel ports can be used with ICA and terminal emulation connections.

The following is an explanation of the different connections that can be found on a NCD ThinSTAR.



- **MOUSE** is a PS/2-type mouse port.



- **KEYBOARD** is a PS/2-type keyboard port.



- **LAN** is an RJ-45 jack. The ThinSTAR automatically detects and connects to either 10BaseT or 100BaseT (twisted-pair) Ethernet.



- **PARALLEL** is a standard DB-25 parallel port for local printers.



- **COM 1** and **COM 2** are DB-9, RS-232 serial ports. Depending on which software version is loaded in the ThinSTAR, serial ports may be used for peripheral devices such as modems, personal digital assistants (PDAs), and bar code scanners.



- **USB ports** (two Type A USB ports)



- **MIC** is a 3.5 mm microphone jack.



- **LINE IN** is a 3.5 mm line audio input jack.



- **LINE OUT** is a 3.5 mm audio output jack.

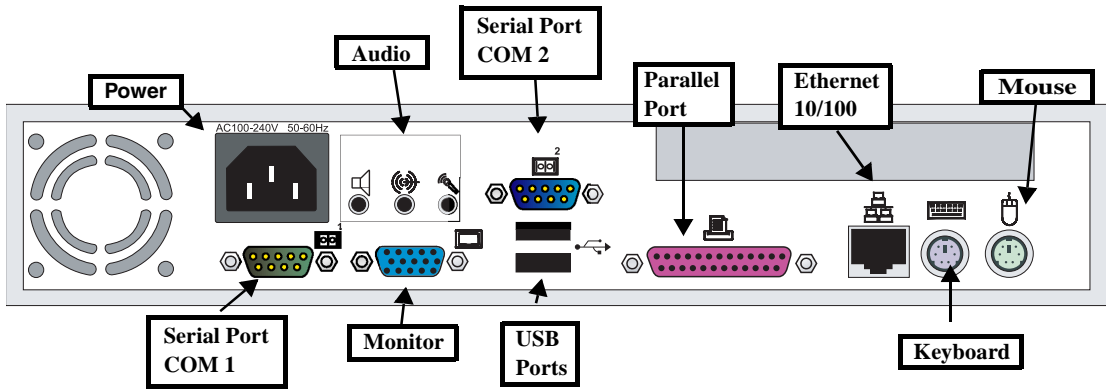


- **MONITOR** is a standard DB-15, high-density, VGA-type monitor connector.

- The power supply connects through the supplied power cable. It automatically detects and accepts either 120 VAC or 240 VAC line voltage.

Connecting the cables

- 1 **Connect the keyboard cable to the KEYBOARD port.**
- 2 **Connect the mouse cable to the MOUSE port.**



ThinSTAR back panel

3 Connect the monitor video cable to the MONITOR port.



Don't overtighten the screws. The video cable connection to the monitor varies. Some monitors have attached video cables.

4 Connect the monitor power cable to a power source.

5 Connect the power adapter cable into the socket.

6 Connect a twisted-pair, 10BaseT or 100BaseT Ethernet cable into the LAN jack.



This RJ-45 jack looks like a telephone jack.

7 Arrange the device and monitor in your work area.

The ThinSTAR is designed to be placed underneath the monitor or beside the monitor (in a vertical orientation using the provided foot or stand).

Connecting peripheral devices

You can connect a modem, printer, bar code scanner, and other peripheral devices to the ThinSTAR.

1 If the ThinSTAR is turned on, log off all its open connections, and then turn off the device.

2 If you have a local printer, connect its cable to the PARALLEL port. You can also attach local serial printers to either serial port: COM 1 or COM 2.

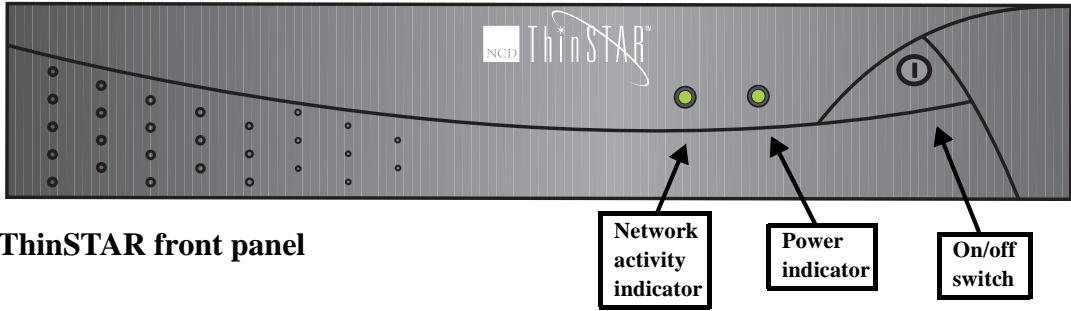
3 If you have an external modem, bar code scanner, or other serial device, connect its cable to a serial port (COM port).

4 Turn on the ThinSTAR and then the peripheral device.

Using the Front Panel

ThinSTAR Front Panel Here are the details of the ThinSTAR front panel (see drawing on the following page).

- **To turn on the ThinSTAR**, push in the triangular on/off ① switch on the front panel.
- **To turn off the ThinSTAR**, push the on/off switch again.
- The *network activity indicator* lights when network activity is detected by the ThinSTAR. Amber color indicates a 10 BaseT connection. Green color indicates 100 BaseT connection.
- The *power indicator* lights when the ThinSTAR is powered on.



ThinSTAR front panel

Arranging Your Work Area

Getting comfortable

These tips might help reduce eye strain and body fatigue when using the ThinSTAR:

- Adjust your chair seat level so that your feet are flat on the floor, your legs form a right angle with the floor, your knees are free of the chair seat, and your lower back is fully supported.
- Adjust the chair height the keyboard and mouse are at elbow height so your wrists are straight and supported.
- Maintain a neutral neck posture with the top of the monitor no higher than your eye level.
- Adjust the monitor and lighting to reduce glare on the screen and to place the monitor at a correct distance for your vision.
- Take periodic breaks to stretch your arms and wrists and rest your eyes.

CHAPTER 2

Configuring the ThinSTAR

This chapter describes how to configure the NCD ThinSTAR for a network.

Automatic ThinSTAR Properties Configuration

Automatic ThinSTAR Properties Configuration

NCD software incorporating Windows CE.Net contains the ability to be configured automatically from the server. Using NCD's ThinPATH Management Portal software, the network administrator can create a properties configuration template which each ThinSTAR will pull from the server when it is powered on. The ThinSTAR will also continue to check for changes to the properties configuration template every time it is powered on.

Note: If the automatic properties configuration is used, then the setup wizard will not appear when the ThinSTAR is booted for the first time.

Selecting the Initial Configurations

Before you begin

To configure the NCD ThinSTAR, ask the system administrator to answer these questions before you begin:

- **Does the network use DHCP to supply IP addresses?**

If not, what is the static IP address for your ThinSTAR?

_____.

If not, do you need to specify a subnet mask and gateway?

_____.

- **Does the network use DNS or WINS to name servers?**

If it uses DNS, what are the IP addresses of the primary and secondary DNS servers and the default domain name?

_____._____._____._____, _____._____._____._____, _____

If it uses WINS, what are the IP addresses of the primary and secondary WINS servers?

_____._____._____._____, _____._____._____._____

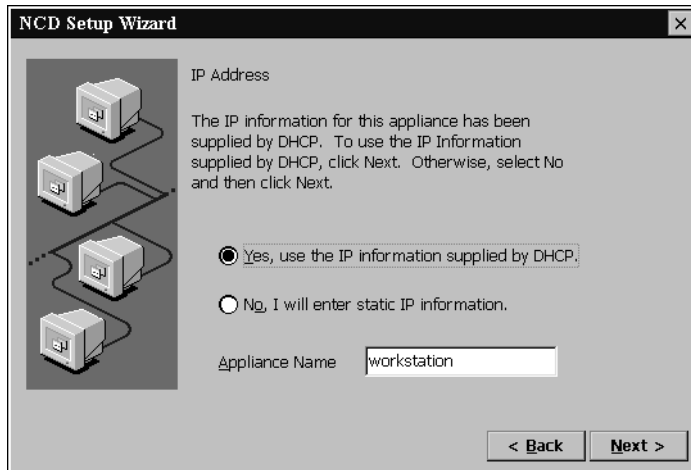
NOTE

The Internet Protocol (IP) address identifies the ThinSTAR on the network.

The Dynamic Host Configuration Protocol (DHCP) is a server-based program that automatically supplies an IP address to the ThinSTAR.

The NCD Setup wizard guides you through the process of configuring the ThinSTAR. The Setup wizard appears when the ThinSTAR starts for the first time or it has been reset to factory-default settings. (See page 46.)

- 1 **Turn on or reset the ThinSTAR.**
- 2 **When the Setup wizard appears, click Next.**
- 3 **Read the End User License Agreement, and then click Accept.**
- 4 **In the IP Address dialog, select Yes or No, and then click Next.**



If you select Yes, an IP address for the ThinSTAR is supplied by DHCP. If you select No, enter a static IP address.

- 5 If you selected **No** in the IP address dialog, type an IP address and other information, if needed, and then click **Next**.

NOTE

The subnet mask identifies communications to servers that aren't on the subnet and then sends them to a gateway computer. The subnet mask is usually a dotted decimal number with 255 or 0 in its fields.

The Gateway setting is the IP address of the computer that routes communications between subnets.

The screenshot shows the 'NCD Setup Wizard' window with the title 'Specify an IP Address'. It contains the following text: 'You must specify the following network information. If you do not know this information, ask your network administrator.' Below this is a table for inputting network information:

IP Address:	0	.0	.0	.0
Subnet Mask:	0	.0	.0	.0
Gateway:	0	.0	.0	.0

At the bottom right, there are '< Back' and 'Next >' buttons.

Ask the system administrator if you need to enter subnet mask and gateway settings.

- 6 If you specified an IP address, you can enable server name resolution by DNS and/or WINS, and then click **Next**.

NOTE

The Domain Name Service (DNS) and Windows Internet Naming Service (WINS) are server-based programs that translate server IP addresses into more easily remembered names. A domain is a group of servers that share access privileges.

The screenshot shows the 'NCD Setup Wizard' window with the title 'Fill in the following optional information to configure the appliance's name resolution.' It contains the following options:

- Enable DNS**
 - Default Domain Name: []
 - Primary Server IP: [. . .]
 - Secondary Server IP: [. . .]
- Enable WINS**
 - Primary Server IP: [. . .]
 - Secondary Server IP: [. . .]

At the bottom right, there are '< Back' and 'Next >' buttons.

To use DNS, type the default domain name and the IP address(es) of the primary and/or secondary DNS server. To use WINS, type of the primary and/or secondary WINS server IP address(es).

7 Select a Desktop Area resolution and Refresh Frequency, and then click Next.

Tip
If you want to use the default resolution, there is no need to test it.



The default setting is 800 x 600 at 60 Hz. You can select higher resolutions and frequencies if your monitor supports them.

To test the settings, click **Test** and then **OK**. If a solid blue rectangle appears on your screen, the resolution and refresh frequency that you chose are supported by your monitor.

8 Select whether you would like to setup a Web Browser connection or define RDP printers.



- 9 You have successfully completed the NCD Setup Wizard, click **Back** to change any settings that you have specified, or **Finish** to apply the settings.



- 10 If you have selected changes to any network settings or the desktop area and refresh frequency, click **Yes** to restart the ThinSTAR.

When the ThinSTAR restarts, the Terminal Connection Manager appears.

If you selected DHCP to supply an IP address but no DHCP server responds within 25 seconds, the Waiting for DHCP Response dialog box appears.

- To try DHCP again, click **Restart**.
- To restart without DHCP, click **Cancel**, press **F2**, type an IP address in the Network tab of the Terminal Properties dialog box, click **OK**, and then restart the ThinSTAR.

CHAPTER 3

Creating Connections

This chapter describes how to create server connections on the ThinSTAR.

Automatic Terminal Connection Configuration

Automatic Terminal Connection Configuration

NCD software incorporating Windows CE.Net contains the ability to be configured automatically from the server. Using NCD's ThinPATH Management Portal software, the network administrator can create a connection configuration template which the device pulls from the server when it is powered on. The ThinSTAR also continues to check for changes to the connection configuration template every time it is powered on.

NCD Connection Manager

Except for when you initially configure the ThinSTAR, or after you have intentionally factory reset the device, the NCD Connection Manager appears whenever the ThinSTAR starts. The Connection Manager lets you configure and manage connections to servers.

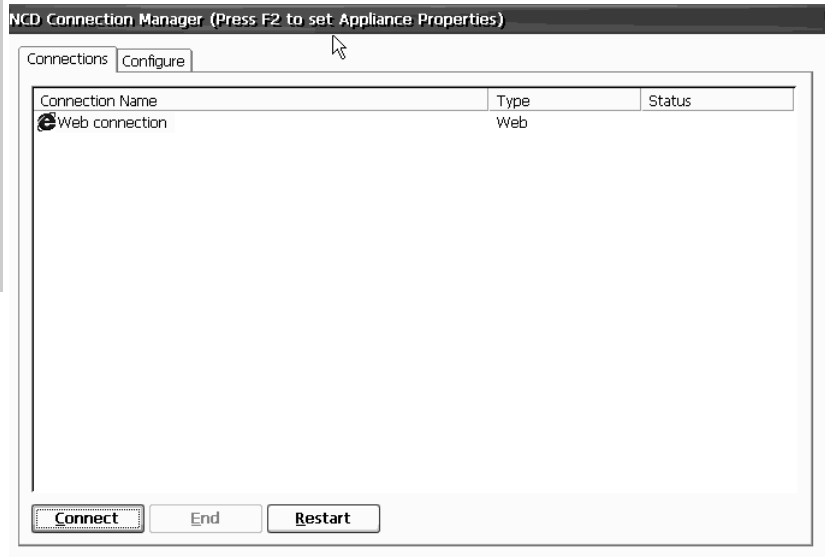
You can make RDP and ICA connections to servers running Microsoft® Windows® 2000 Server or Windows® NT 4.0 Terminal Server Edition. PPP (Point to Point Protocol)/RAS (Remote Access Server) dialup connections can be configured to run RDP and ICA connections on remote servers. Pericom terminal

NOTE

RDP and ICA are protocols that enable ThinSTARs to use Windows-based programs running on servers.

ICA connections require Citrix's MetaFrame, WinFrame, or CDS to be installed on the server to which you are connecting.

emulation connections can be used to connect to servers, minicomputers, and mainframes

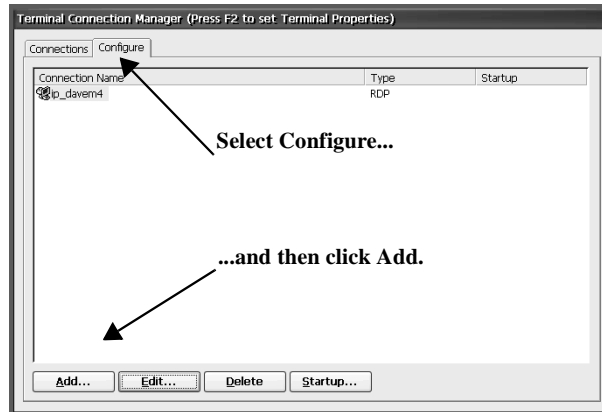


Note: There is also a simplified Single Button Connection Manager used to connect to a ThinSTAR's default connection (see "Single Button Connection Manager" on page 40).

Adding a connection

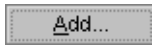
- 1 If the Connection Manager isn't on screen, press CTRL + ALT +**

END.



Select the Configure tab and click Add to create a connection.

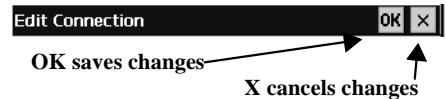
- 2 Select the Configure tab.
- 3 Click Add.



Once you click **Add**, the New Connection dialog will appear. Continue by following the directions on creating the specific type of connection you would like to establish as further explained in this chapter.

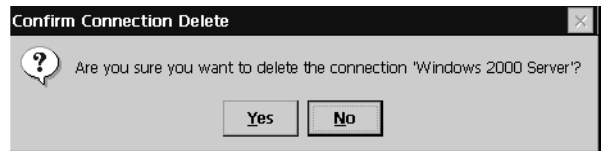
Editing a connection

Once created, you can edit any connection (except for the Internet Explorer Web browser) by clicking **Edit**. A tabbed dialog containing all of the settings appropriate for the connection type will appear. Click **OK** to save changes to the connection, or **X** to cancel any changes.



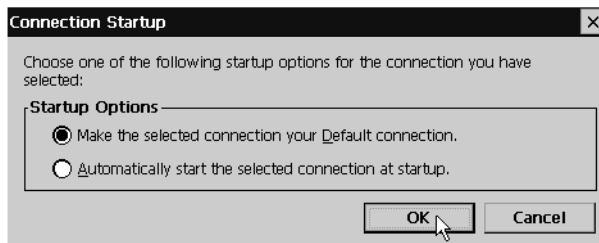
Deleting a connection

Highlight a connection, and then click **Delete**. A confirmation



dialog box will appear. Click **Yes** to delete the highlighted connection.

Connection Startup



Highlight any defined connection and click **Startup** to set the connection as the Default Connection, or

to set the connection to automatically start at device setup:

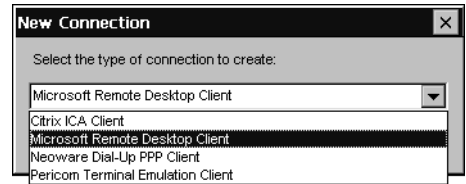
- **Make the selected connection your Default connection.** Only a single connection can be defined as the Default connection. The Default connection is started when the user clicks **Connect** on the ThinPATH Connection Manager one-button connection manager. (See “Enable Single button view - Click this checkbox to display a Single Button Connection Manager in place of the default Connection Manager. When enabled, the ThinPATH Connection Manager Connect button starts the connection defined as the Default Connection in the Connection Manager. (See “Connection Startup” on page 20.)” on page 57.)
- **Automatically start the selected connection at startup.** You can select one connection that will automatically start when the ThinSTAR starts up. If you want all connections to automatically start, you can use the Autostart all connections checkbox on the Administration tab of the NCD ThinSTAR Properties dialog. See “Autostart all connections” on page 56.

Creating an RDP connection

- 1 In the drop-down list, select *Microsoft Remote Desktop Client*,

and the click OK.

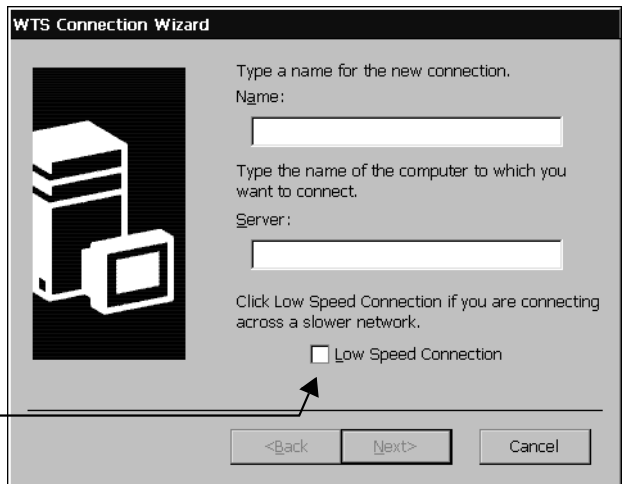
Select Microsoft Remote Desktop Client from the drop down menu



- 2 Type a name for the connection, as well as the IP address or DNS or WINS name of the server to which you would like to connect. Click in the Low Speed Connection checkbox if you are using a wide-area network. When finished, click Next.

Type a name for the connection and the server you would like it connect to.

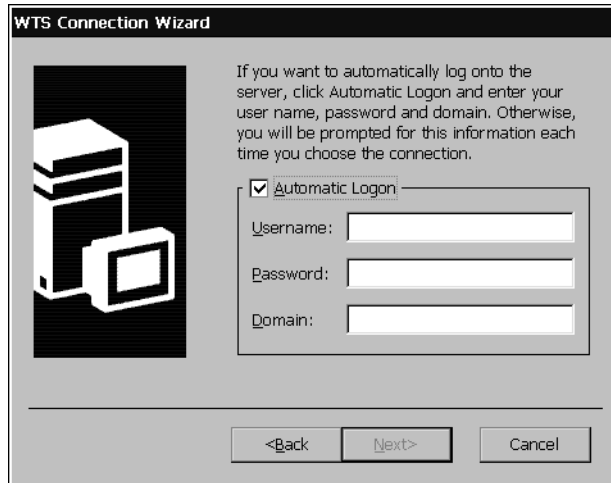
Select a Low Speed Connection, only if you are using a wide-area Network.



- 3 If you want, select Automatic Logon, and then type your user name, password, and domain name. When finished, click

Next.

Click the Automatic Logon checkbox and then enter your logon information.



If you don't type this information now, it will be requested each time you start this connection.

Note: If this ThinSTAR is used by multiple people, then do not enter this information.

4 Select Desktop or Application file name, and click Next.

Select Desktop or Application file name and enter the appropriate information, if necessary.



For a connection that opens to a full-screen Windows desktop, select Desktop. For a connection that opens to a specific Windows-based program, select Application file name, and then type its name and (optionally) a working directory for its files.

5 Click Finish or select back to change any configuration options for this connection.

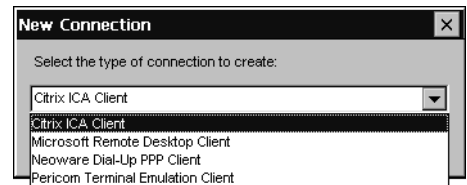
The connection will appear in the Connection Manager.

Creating an ICA connection

ICA is a network protocol used by Windows NT-based servers running Citrix MetaFrame, WinFrame, or CDS. ICA connections also let you create dial-in and null-modem serial port connections.

- 1 In the Connection Manager select the Configure tab and then click Add.**
- 2 Select *Citrix ICA Client* from the drop-down list, and then click OK.**

Select Citrix ICA Client from the drop down menu



- 3 Select a connection type, and then click Next.**
 - If you're using an Ethernet network, select *Network Connection*.
 - If you're using a serial port connection, select *Dial-in Connection*.
- 4 If you selected a network connection, select a Citrix server or a published application, and then click Next.**

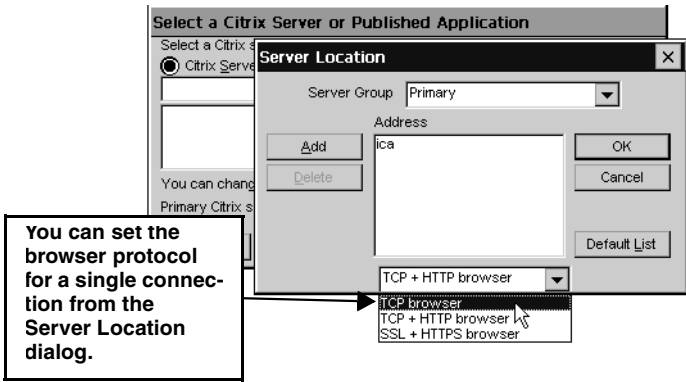
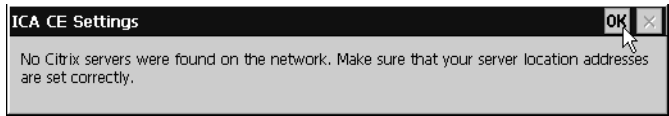
NOTE

A published application is a server-based program to which you can directly connect.

Note: If you are using a version of Citrix MetaFrame prior to XP in your server farm, you may not see a list of servers or applications in this dialog because the ICA 6.2 client defaults to a broadcast protocol of "TCP + HTTP browser" and earlier server

farms typically use "TCP browser" broadcasts. For information about changing the global browser protocol, see "Changing the Global ICA Client Settings" on page 61.

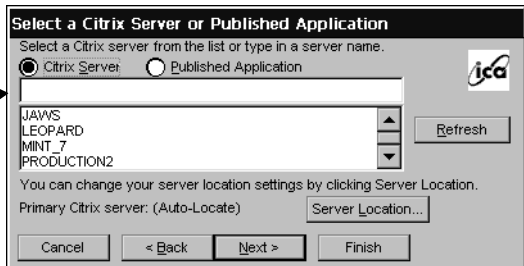
This error message may indicate that you need to change the default browser protocol in Global ICA settings.



To change the broadcast protocol for a single connection, or to connect to a server that isn't on the local network, click **Server Location**.

Type a server or application name, or select a server or application from the list.

Server IP addresses can also be entered.



- 5 If you selected a dial-in connection, select a dial-in device and serial communication (COM) port and other settings, and

then click **Next**.

Specify and configure your Dial-In Device, and enter a Phone Number

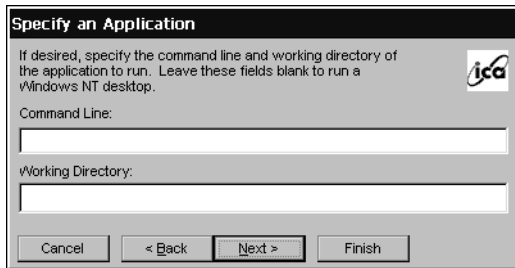
- To configure a modem connection, select a Hayes compatible device, type a phone number, and then click **Configure** to select the port settings and call options. Set the Connection Preferences to match the modem settings, and then click **OK**.
- To configure a null-modem connection, select a serial cable device, click **Configure** to select the serial port settings, and then click **OK**.

6 Type a title for the ICA connection, and click **Next**

Type a name for Citrix ICA connection

7 If you want, specify a Windows application to start with the

connection, and then click Next.

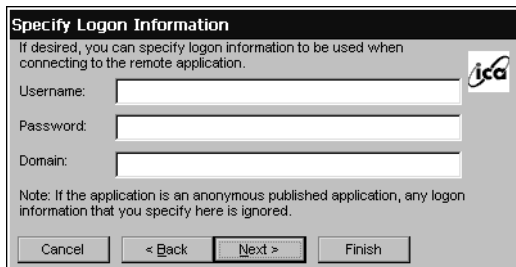


Type the command line and the working directory of an application to autostart when you start this connection.

In the Command Line box, type the path and application name. For example, if Microsoft Notepad was located in the C:\WTSRV directory, you would type *C:\WTSRV\notepad.exe*.

In the Working Directory box, type the drive and path of its working directory. For example, *C:\My Documents*.

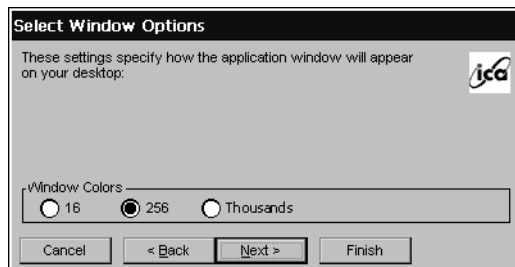
8 If you want, specify logon information, and then click Next.



Type your logon information.

If you don't type logon information now, it will be requested when the connection starts.

9 Select a color depth, and then click Next.



Select the number of simultaneous on-screen colors you would like this connection to use. (MetaFrame is required on the server for color depths higher than 256 colors.)

Note: The option to use thousands of colors is only available when the device's desktop area and refresh frequency is set to a resolution that supports high color (i.e. - 800x600 @ 85hz high color (16-bit)). See page 21.

- 10 If needed, select printing, data compression sound, speed-screen, and encryption settings. When finished, click Next.**

Select and configure these options if you would like to use them.

Use Printer Configuration Utility

If you are using MetaFrame 1.8 or later, you have two choices regarding configuring printers attached locally to the NCD terminal: (1) If only Administrators (using the MetaFrame Printer Configuration Utility on the server) are to define and configure any locally attached printers -- check the box, or (2) if users need to locally define printers for their MetaFrame sessions -- uncheck the box.

Compress Data Streams

If you're using a dial-in connection or wide-area network, you can select Compress Data Stream to increase performance.

Enable Sound

If the NCD terminal and network support ICA audio, select Enable Sound, and then select a sound quality. High is recommended for high-speed connections, Medium for most connections, and Low for dial-in connections.

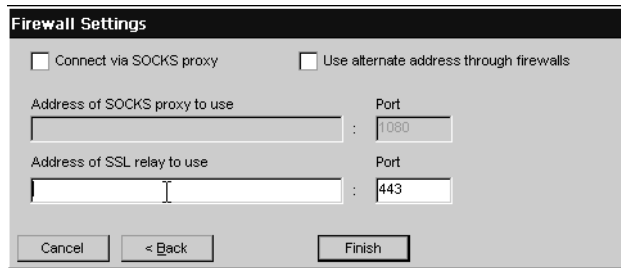
SpeedScreen

If you are using MetaFrame 1.8 Feature Release 1 or later, you can enable SpeedScreen3. Speedscreen3 is designed to enhance the performance of the low bandwidth or high latency connection. For slower server connections set the SpeedScreen option to **On**. If you are uncertain of the connection speed set the SpeedScreen option to **Auto**.

Encryption Level

If the MetaFrame server includes the optional Citrix SecureICA™ Services, you can choose different encryption levels for the connection (up to 128-bit RC5 encryption). If SecureICA has not been installed on the MetaFrame server, choose *Basic* encryption.

- 11 Click in the checkbox if you would like to use an alternate address when connecting through firewalls. Click in the SOCKS checkbox if you would like to connect via a SOCKS proxy server. If so, specify the address and port for the proxy to use. When you complete this step, click Finish.**



Select and configure Firewall options if you would like to use them.

The ICA connection will appear in the Connection Manager.

Creating a PPP/RAS dialup connection

NOTE

The dialup connection functionality will be available in a future release.

PPP (Point to Point Protocol)/RAS (Remote Access Server) is the Internet Standard for the transmission of network packets over dialup connections. Once a PPP/RAS connection has been establish, a user can then run RDP, ICA, or terminal emulation server sessions.

- 1 **In the Connection Manager select the Configure tab and then click Add.**
- 2 **In the New Connection popup dialog select *NCD Dial-Up PPP Client* from the dropdown menu, and then click OK.**
- 3 **The NCD Create New PPP Connection Wizard starts and the first step is to type a name for the connection. Click Next to continue.**
- 4 **Select a modem from the drop down menu.**
Note: If an internal modem is installed, it will be seen as “Com 3:”.
- 5 **After you’ve selected the modem, click Device Properties.**
In the Device Properties dialog define the Port Settings and Call Options according to the modem setup. To learn the setting for the modem, read its manual. Once you’ve completed setting up the modem configuration, click **OK** in the upper right hand of the Device Properties dialog.
Note: When setting the baud rate for 56k modems, choose “115200.”
- 6 **If the Internet Service Provider (ISP) or the system administrator has specified settings for the PPP/RAS connection then click TCP/IP Settings in the Select Modem dialog.**
To enter these specific settings, click on the User Specified radio buttons and then enter the settings. When finished, click **OK** in the upper right hand corner. To configure the connection using SLIP, and/or compression, check with the system administrator for the proper settings. The use of a remote gateway is selected by default when using a PPP Dial-Up connection. If you are using this connection to augment the Local Network with a connection to a remote site, then check with the network administrator to see if the use of a remote gateway is necessary.
- 7 **If you would like to secure the Dial-Up PPP connection using encryption, select the Security button in the Select Modem dialog.**

Click the checkboxes that coincide with the security you would like to provide for the connection. When finished, click **OK**. Click **Next** in the Select Modem dialog to continue.

8 Enter your login information. When complete, click Next.

Note: This information is used to login, via PPP/RAS, to the ISP or other network. It may be different from your Windows login information. A domain name is not always necessary for a PPP/RAS connection. Check with your System Administrator to confirm if a domain name should be entered with this PPP/RAS connection.

9 To automatically start one or more host connections when you establish a Dial-Up PPP connection, select those host connection names you would like to autostart and click Next.

Note: To select multiple host connections to autostart, hold down **Ctrl** and click on each host connection you would like to autostart. To select a range of host connections to autostart, click on the first connection, hold down **Shift**, and then click on the last host connection you would like to include. This will select every name between the first and last connections that you clicked.

10 Enter the telephone number to your internet service provider or your dial-up server.

Once you've specified the telephone number, click **Finish** to complete the PPP/RAS connection configuration.

Creating a Pericom Terminal Emulation Connection

Pericom terminal emulation connections allow the user to connect to servers, minicomputers, and mainframes by emulating terminals. The supported terminal emulations include:

Tip

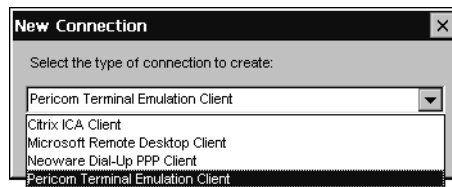
For more detailed information about the Pericom terminal emulation client, read the *Terminal Emulation User's Guide*, available at www.ncd.com.

- **ADDS A2.**
- **ANSI BBS.**
- **DEC VT52, VT100, and VT300 7-bit and 8-bit.**
- **Hazeltine HZ1500.**
- **HP70092.**
- **IBM 3151.**

- IBM3270 (3278 models 2, 3, 4, 5, 2-E, 3-E, 4-E, and 5-E; 3279 models 2, 3, 4, 5; and 3287 model 1).
- IBM5250 (including keyboard macros).
- SCO Console.
- Tandem 6530.
- Televideo TVI910 and TVI920.
- Wyse WY50, WY50+, and WY60.

To create a terminal emulation connection, you must select the emulator type and the host computer. You can also select Telnet, serial port, autologin, and client printer settings.

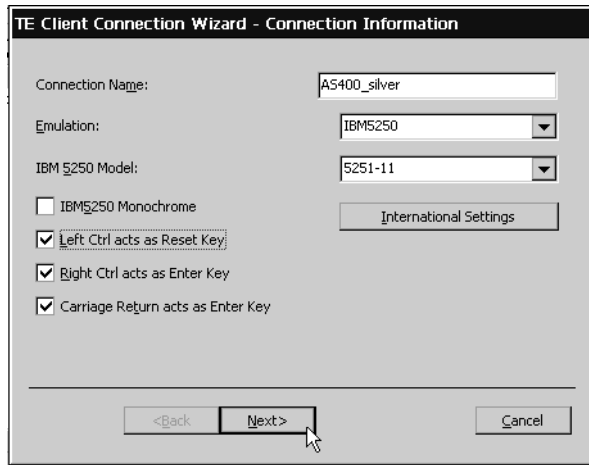
- 1 In the Connection Manager, select the **Configure** tab and then click **Add**.
- 2 In the New Connection popup dialog select *Pericom Terminal Emulation Client* from the dropdown menu, and then click **OK**.



Select Pericom Terminal Emulation Client from the dropdown menu

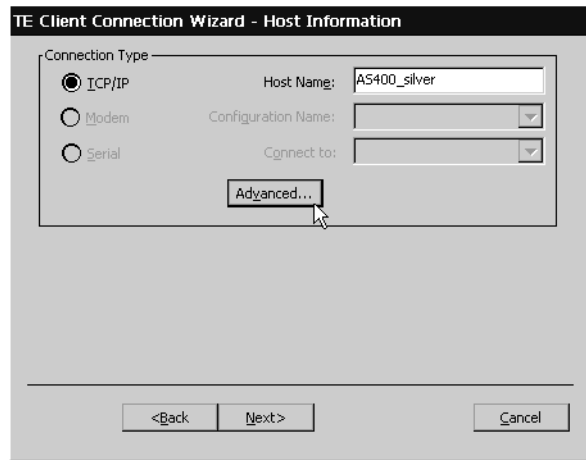
- 3 Type a connection name, select a terminal emulation and

model type (if required), and then click Next.



Note: Click **International Settings** to specify the type of keyboard you are using for your terminal emulation session.

4 Select the type of connection you are using to connect to the server, minicomputer, or mainframe.



- For a connection to an Ethernet network, select *TCP/IP*, and continue with step 5.

- For a dial-in serial port connection, select *Modem*, and continue with step 6.
- For a null-modem serial port connection, select *Serial*, and continue with step 7.

NOTE

To use a host name, a DNS or WINS server must be specified for the NCD terminal.

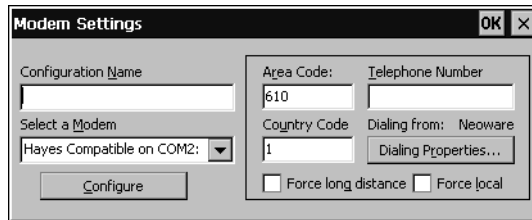
5 If you selected a TCP/IP connection, type the IP address or DNS/WINS name of the host computer, and then click **Advanced.**

NOTE

The Telnet configurations you can make depend on the selected emulation.

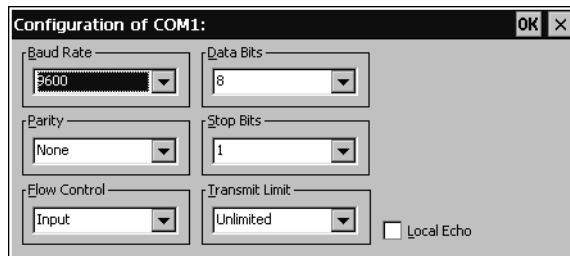
- To change the default Telnet port number, 23, type another 16-bit port number.
- To override the terminal name reported over Telnet, type a name in the Telnet Name box.
- To avoid generating a Telnet echo when the connection starts, select Suppress Echo.
- To select Telnet Binary or EOR options, select *DO* in the Force Negotiation section.
No, the default setting, won't force any negotiations. *DONT* forces a negotiation by telling the host that the option isn't supported.
- To send a timing mark (TM) or carriage return (CR) with a Telnet break packet, select the appropriate break settings.

6 If you selected a modem connection, click Configure.

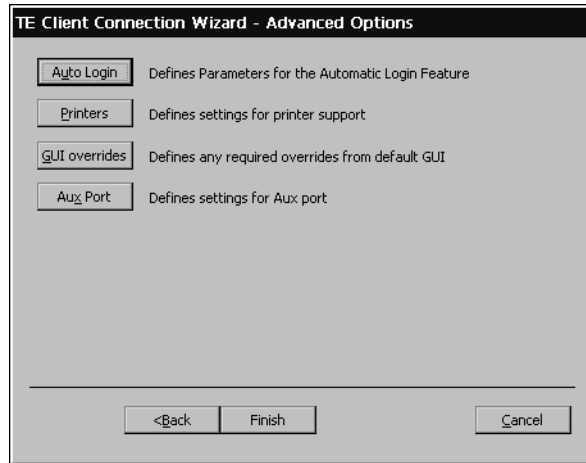


- If this is a new configuration, type a configuration name.
- To set serial port settings and call options, click **Configure**.
- To set advanced dialing settings, click **Dialing Properties**.

7 If you selected a null-modem connection, select serial communication (COM) port 1 or 2, click Configure, select the serial port settings, and then click OK.

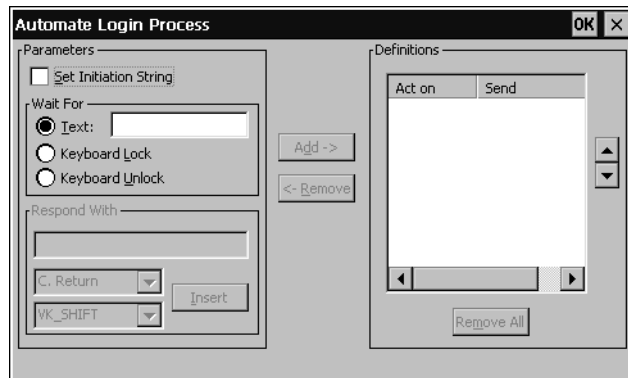


8 Click Next to display the Advanced Options dialog box.



Auto Login

9 To create an autologin connection, click Auto Login, select settings, and then click OK.



NOTE

Autologin connections automatically enter your username, password, and other information when you log into a host. To set up an autologin connection, you need to know the exact prompts sent by the host at login.

- To automate the login, first type the login prompt sent by the host (for example, *login:*) in the Wait For box. Then type your username in the Respond With box, select an item from the drop-down menu (for example, *C. Return*), click **Insert**, and click **Add** to add it to the Definitions list.

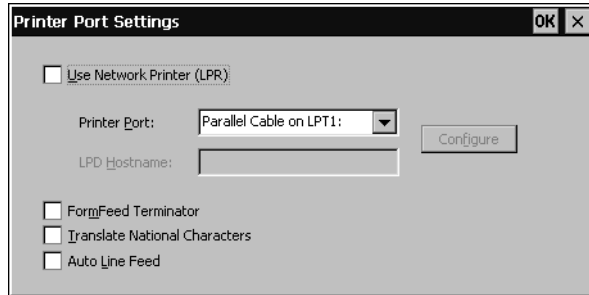
Repeat this procedure for the password and any other prompts sent by the host. The prompts that you type in the Wait For box must exactly match the prompts sent by the host.

- To reposition a definition, use the up and down arrow buttons.
- To edit a definition, highlight it, click **Remove**, and then edit.

Printers

10 To set up a client printer, click Printers, select a printer port and other settings, and then click OK. To set up a network

Select a printer port or click the “Use Network Printer (LPR)” checkbox



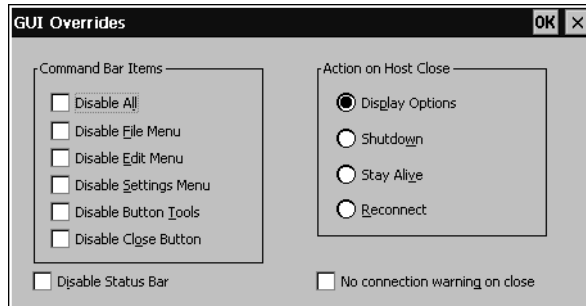
printer using LPR click the “Use Network Printer (LPR)” checkbox and enter an LPD Hostname

If you select a serial port for a client printer, click **Configure**, select the appropriate serial port settings, and then click **OK**.

- To advance the paper to the top of the form after printing, select FormFeed Terminator.
- To start at the next line when the printer receives a carriage return, select Auto Line Feed.

GUI overrides

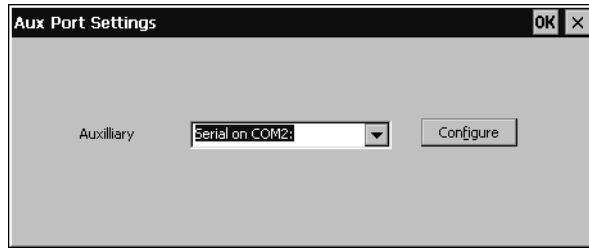
11 To customize the terminal emulation graphical user interface, click GUI Overrides, select items, and then click OK.



Aux Port

12 If you would like to add an auxiliary device to be used during

the terminal emulation session, click Aux Port.



13 In the Advanced Options dialog box, click Finish.

CHAPTER 4

Using Connections

This chapter describes how to use server connections on the ThinSTAR.

Using Connections

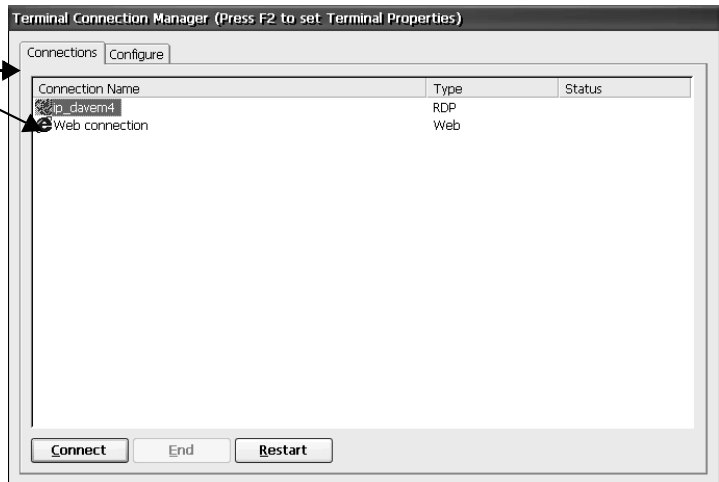
Starting a connection

Once a connection has been created, you can start that connection.

1 In the Terminal Connection Manager, select the Connections tab.

To display the Terminal Connection Manager, press CTRL + ALT + END.

To start a connection select the Connections tab, and then double-click a connection name.





2 Double-click a connection name.

Or click a connection name, and click **Connect**.

Or press ↑ or ↓ to highlight a connection name, and then press Enter.

To use the default connection, simply click **Connect**.

3 If Automatic Logon wasn't selected for the connection, type your logon information, and then click OK.

You can start more connections now.

Single Button Connection Manager

If the ThinSTAR is set to display the Single Button Connection Manager, click **Connect** to start the default server connection on the



device. See "Selecting startup options" below to learn how to specify which server connection is the default.

Selecting startup options

As startup options, you can select a default and an autostart connection. The default connection is highlighted in the Connection Manager. An autostart connection starts whenever the ThinSTAR starts.

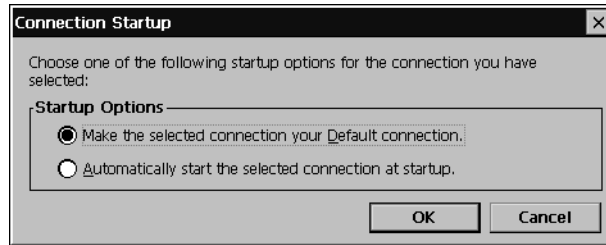
Note
You can set all connections to start automatically. To learn how, see page 56.

If you don't select a default connection, the first connection listed in the Connection Manager will be used. The autostart connection, if any, also functions as the default connection. Selecting another default connection returns the autostart connection to normal status.

1 In the Terminal Connection Manager Configure tab, select a connection name.



2 Click Startup.



3 Select a startup option, and then click OK.

Switching connections

When more than one connection is active on the ThinSTAR, you can switch between connections by using these key combinations:

- **To cycle through the active connections**, press CTRL + ALT + ↑ or ↓.
- **To display the default connection**, press CTRL + ALT + HOME.
- **To open the Terminal Connection Manager**, press CTRL + ALT + END.

Then select another active connection in the Connections tab.

Cutting and pasting between connections

You can cut and paste text and graphics between Windows programs in different ICA connections. Use the regular Windows cut, copy, and paste commands.

Editing and deleting connections



You can delete inactive connections or change their properties.

- 1 **To edit a connection, select the Terminal Connection Manager Configure tab, select the name of the connection you would like to edit, and click Edit.**

Or double-click a connection name in the Configure tab.

- 2 **Depending on the type of connection you are editing, a specific edit connection dialog will appear. For detailed information about the specific edit connection dialogs, (see**

“Creating Connections” on page 17).

- 3 **When you are finished editing the connection configuration, click OK, or complete the wizard, depending on the type of connection you are editing.**
- 4 **To delete a connection, select its name in the Configure tab, click Delete, and then click Yes.**

A rectangular button with a light gray background and a thin border. The word "Delete" is centered on the button in a dark gray, sans-serif font.

Printing over the network

When using RDP, ICA, or terminal emulation connections, you can print program files to network printers just as you would on a personal computer.

Printing Locally

To print to a client printer (a printer directly connected to the ThinSTAR), you must setup the printer based upon the type of session you are running.

Setting Up Local Printing in an RDP Session

Programs running in RDP connections can print to client printers, if the ThinSTAR's Properties have been properly configured. To properly configure your printer, see Chapter 5 - Changing ThinSTAR Properties - Step #6.

Local Printing in an ICA Session

Programs, running in ICA connections, can print to client printers, if the ThinSTAR serial or parallel ports have been mapped on a Windows NT-based server. Ask the system administrator for assistance.

Closing connections

A rectangular button with a light gray background and a thin border. The word "End" is centered on the button in a dark gray, sans-serif font.

- **To disconnect a connection**, click **Disconnect** in its Windows Start menu. Or click **End** in the Terminal Connection Manager Connection tab.

When you disconnect a connection, its applications and files will appear as you left them when the connection is restarted.

- **To log off a connection**, click **Logoff** in its Windows Start menu.

Using a Pericom Terminal Emulation connection

Tip

The curved arrow buttons on right of the Command bar toggle up to 48 soft buttons (12 in four levels) that you can define by selecting Settings | Soft Buttons in the menus

When all the connections are closed, you can turn off the ThinSTAR.

Once you've created a terminal emulation connection, here's how to start using it.

- 1 **In the Terminal Connection Manager, select the Connections tab.**
- 2 **Double-click a terminal emulation connection (TEC) name, or click a name and then click Connect.**
- 3 **If the login for this connection hasn't been automated, enter the network user name and then password.**

After login, the terminal emulation screen appears, with a Command bar at the top, a scroll bar at the right, and a status bar at the bottom.



Command bar

Using the Command bar, you can change settings, print screens, and use the menu commands.



Status bar

The status bar lets you switch between local and online mode, and pause or resume scrolling.

The status bar also displays information about the emulation: typically the emulation type, the line and column of the text cursor, the edit mode (overstrike or insert), and the printer status.

- 4 **Type entries at the cursor, and then press Enter.**
- 5 **To close the connection, click File | Exit. Or click the close button (X) on the Command bar.**

CHAPTER 5

Changing ThinSTAR Properties

This chapter describes how to set the ThinSTAR Properties.

Changing Configurations

Understanding ThinSTAR properties

After the ThinSTAR is initially configured, you can change its Setup settings, keyboard locale, and other ThinSTAR properties. The ThinSTAR Properties dialog box also includes management options so you can automatically start and restart the connections, password protect the ThinSTAR, and prevent connection property changes.

Don't confuse ThinSTAR properties with connection properties. Connection properties are configured in the Connection Manager and apply only to specific connections. ThinSTAR properties apply to all connections.

Accessing the ThinSTAR Properties dialog box

- 1 If the Connection Manager is on screen, press the F2 key.**
- 2 If a connection session is on-screen, simultaneously press Ctrl + Alt + End keys to display the Connection Manager screen, then press the F2 key.**

The General tab

The General tab of the NCD Appliance Properties dialog box lists information about the ThinSTAR hardware and software. The product ID number is unique to the ThinSTAR.

To reset all ThinSTAR and connection properties to their factory default settings, select the Reset check box in the General tab, click **Yes**, and then click **OK** to restart the ThinSTAR.

Caution

If you reset the ThinSTAR, you must reenter all of its properties and connections. TSCALs (Terminal Services Client Access Licenses) for Windows 2000 Server RDP sessions are also deleted and lost when the ThinSTAR is reset to the factory-default property settings.



Appliance Name

The Appliance name defaults to the name "NCD-xxxxxx" with the last six digits of the name being the last six digits of the ThinSTAR's built-in network interface MAC address (also the last six digits of the ThinSTAR's serial number). This name is used by Citrix servers to identify the client device, and by Microsoft Windows 2000 Servers with Terminal Services to define client-connected printers. If you change the Appliance Name from the default, you should use another unique identifier.

Note: The Appliance Name field may not contain the following characters:

\ : " ; / ~ ' @ # \$ % ^ { } < > * + = | ? , . <space>

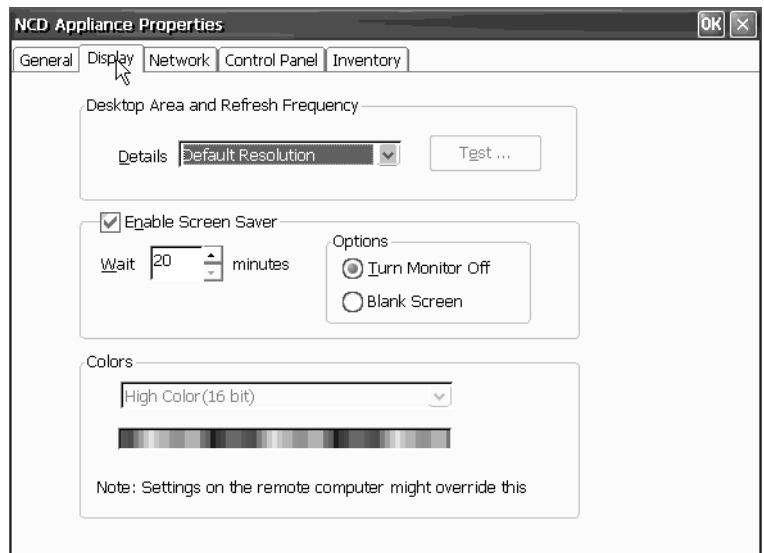
The Display tab

NOTE

The wait time sets the minutes of inactivity after which the screen saver will appear.

Unless the wait time is set for a longer period, your monitor will shut down after 20 minutes of inactivity to save energy.

You can change the desktop area and refresh frequency. If you do, click **Test** to test the setting. If the setting is supported by your monitor, a solid blue screen appears during the test.



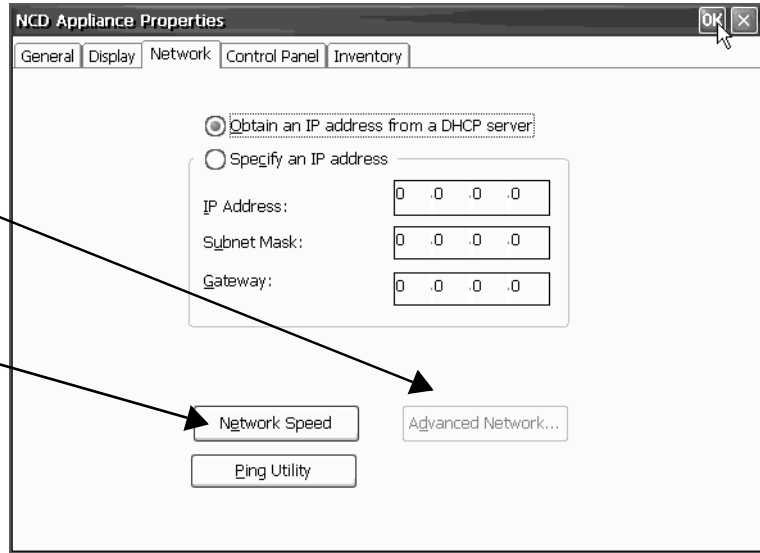
Click the Enable Screen Saver checkbox to enable the screen saver. Select the amount of idle time before the screen saver starts, and whether you would like the screen saver to turn the monitor off or leave the screen blank.

The Network tab

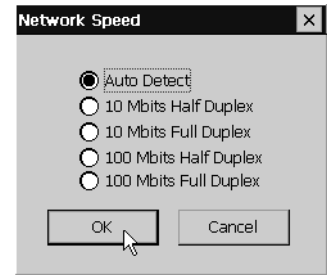
Select DHCP to supply an IP address to the ThinSTAR, or specify a static IP address. You can also type subnet mask and gateway settings.

To enter DNS or WINS settings, click **Advanced Network**. This setting is only available if you manually specify an IP address.

To manually specify the network speed, click **Network Speed**.

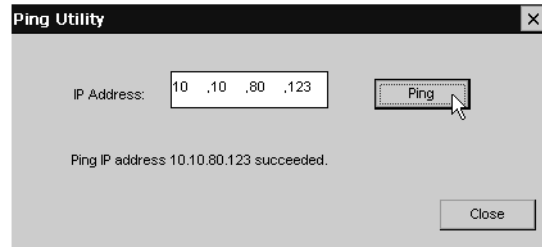


Click **Network Speed** to manually override the device's automatically detected Ethernet connection speed. The options are Auto Detect (default selection), 10 Mbits half duplex, 10 Mbits full duplex, 100 Mbits half duplex, and 100 Mbits full duplex.



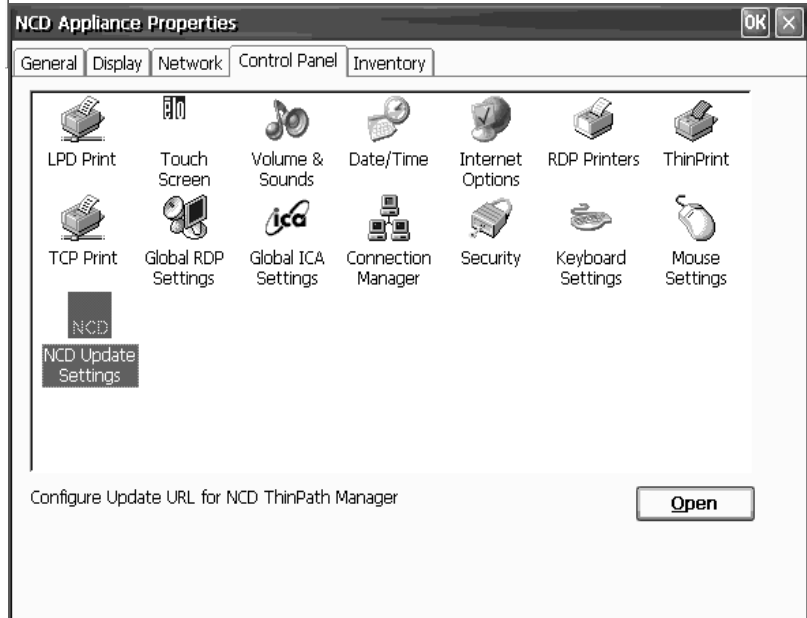
The built-in Ping utility provides a mechanism to check that network settings are correct, and that the network connection is working. Click **Ping** to access the utility's dialog. Enter the destination IP address, then click **OK**. The results of the Ping Utility test appears in the dialog.

To enable DNS or WINS for the ThinSTAR, click **Advanced Network**, type the appropriate settings, and then click **OK**.



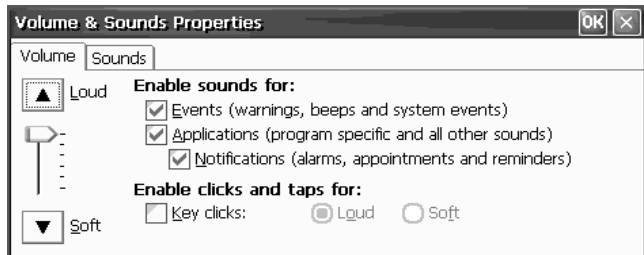
Control Panel tab

The Control Panel tab provides configuration of many features of the ThinStar Appliance.



Volume and Sounds

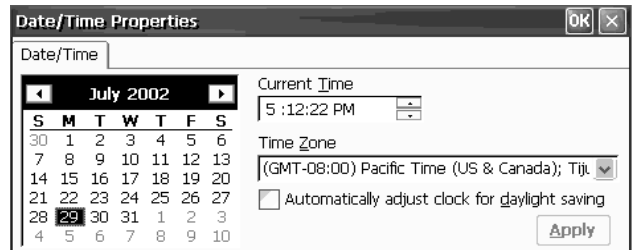
Use the Volume Control slider to set the ThinSTAR's internal/external speaker volume. This dialog also allows enabling sounds for events and applications as well as key clicks.



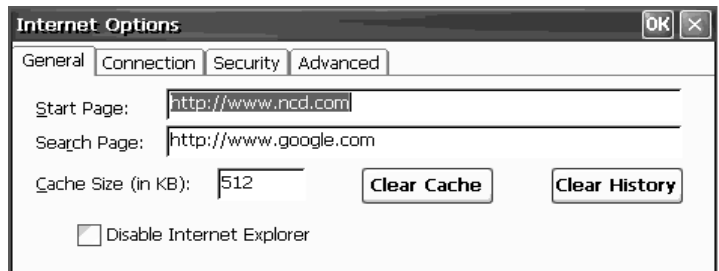
Date / Time

ThinSTAR date, time, and time zone can be set by clicking Time Settings.

These settings are used by Citrix MetaFrame XP servers and the ICA 6.2 client if the server has been set to enable Per-User Time Zone Support.

**Internet Options**

To configure the web browser, click Internet Options in the Control Panel tab.



- **Start Page** - The specified Start page URL is the page that will appear when you start the browser, or when you click **Home** in the browser.
- **Search Page** - The specified Search page URL is the page that will appear when you click **Search** in the browser.
- **Browser Cache** - Specify the cache size to use for saving the history, cookies, and elements of the pages that you have visited, so that they may be accessed when you use the browser in the future. The use of these elements can speed up the loading of previously visited pages.

- **Disable Internet Explorer** - Select this option to remove the web connection from Connection Manager.
- **Setting Preferences** - Click the Advanced tab button to specify how you would like the browser to display hyperlinks and images and play sounds.
- **Setting Proxy information** - If the connection to the internet uses a proxy server, then click **Connection Tab** to specify the proxy servers settings.

RDP Printers

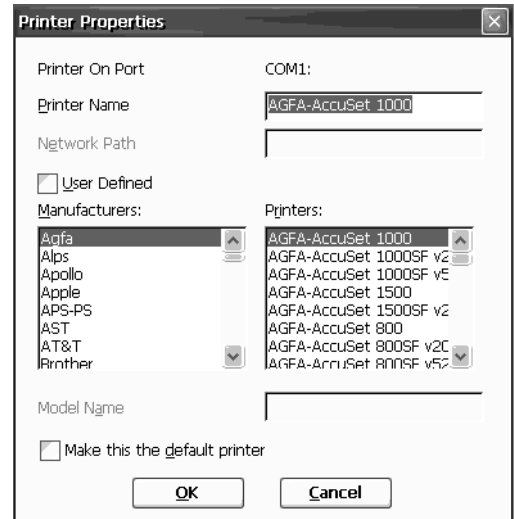
RDP Printers - The printers defined in this window are used only by RDP connections to Windows 2000 Servers with Terminal Services activated.

Click Add Printer to create an RDP local printer definition, or select an already-defined printer and click Properties.



In the Printer Properties dialog you can specify the following:

Type a name for the printer and the select the Manufacturer and Model of the printer



- **Printer Name** - This field allows you to name the printer you have connected to the windows-based terminal.
- **Manufacturers** - Select the manufacturer of the printer connected to the windows-based terminal.
- **Printers** - Select the model of printer you have connected to the windows-based terminal from the list of printers made by the manufacturer you selected.
- **Make this the default printer** - Click this checkbox if you would like the printer connected to the windows-based terminal to be the default.

Once you have defined the printer, click **OK**.

ThinPrint®

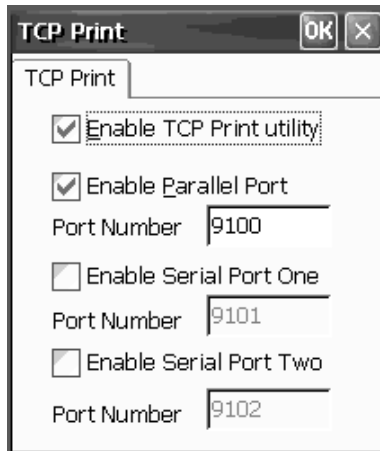
ThinSTARs include a local client that supports ThinPrint® servers. To make configuration changes to the ThinPrint client, click the **Thinprint** icon.



For information about configuring the ThinPrint client and server software, please visit <http://www.thinprint.com/>
ThinPrint is a product of ThinPrint GmbH, Berlin, Germany.

TCP Print

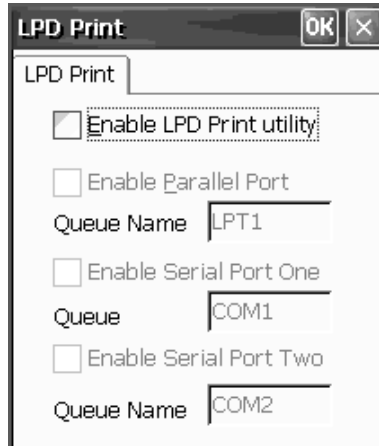
Click this icon to enable a printer connected to the local ThinSTAR to be used by other users through a Windows 2000 Server. In the TCP Print dialog select the port the printer is attached to. You can modify the port number if the default setting is not appropriate.



LPD Print

Click this icon to enable a printer connected to the ThinSTAR to be used through any server that can print using the LPR/LPD protocol (UNIX, Linux, Windows NT Server, Windows 2000 Server,

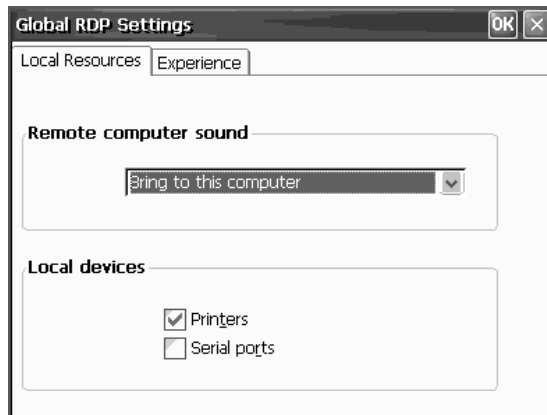
mainframes, etc.). In the LPD Print dialog select the port your printer is attached to and specify the queue name.



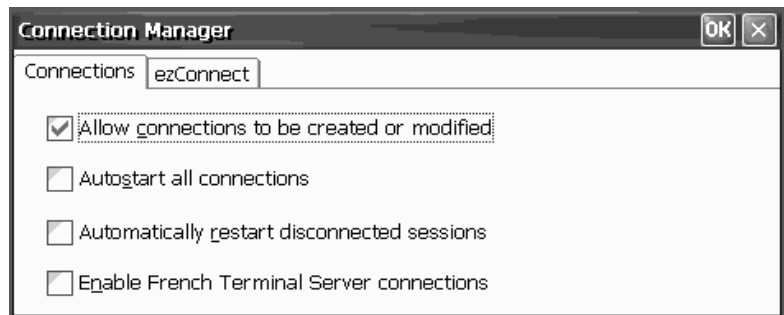
Global RDP Settings

Global RDP Settings control the following settings:

- **Remote Computer Sound** - Set to bring to this computer, don't play, or leave at remote computer
- **Local Devices** - Choose to make local printers and serial ports available in a session
- **Experience** - Choose how to optimize connection performance



Connection Manager



Connections tab

- **Allow connections to be created or modified**

This checkbox allows you to prevent ThinSTAR users from adding, changing, or deleting connections defined through the Connection Manager. Check this box to allow access to the Configure tab in Connection Manager. Uncheck this box to hide the Configure tab.

Checking this box and setting a ThinSTAR password effectively locks down the desktop device so that end users may not make any changes.

- **Autostart all connections**

This checkbox, if checked, causes all of the defined connections (in the Terminal Connection Manager) to be started whenever the ThinSTAR starts. If you desire to have fewer than all of the connections autostart, set the individual connections to autostart. See “Selecting startup options” on page 40.

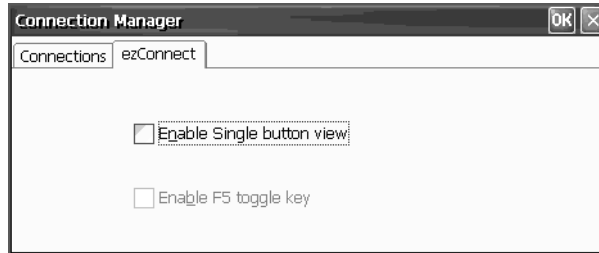
- **Automatically restart disconnected sessions**

This checkbox, if checked, causes any disconnected connection to automatically reconnect. Used in conjunction with autostarted connections, a ThinSTAR can be configured to always be connected to one or more servers.

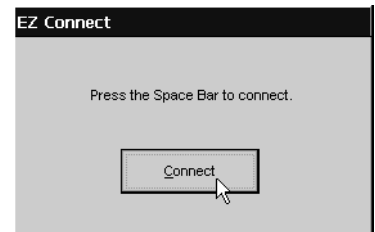
- **Enable French Terminal Server connections**

This checkbox, if checked, enables RDP connections to the French version of Windows NT Server, Terminal Server Edition. This checkbox does not affect ICA connections.

ezConnect tab - set the ThinSTAR to display a single button Connection Manager dialog when the ThinSTAR is booted.



- **Enable Single button view** - Click this checkbox to display a Single Button Connection Manager in place of the default Connection Manager. When enabled, the ThinPATH Connection Manager Connect button starts the connection defined as the Default Connection in the Connection Manager. (See “Connection Startup” on page 20.)
- **Enable F5 toggle key** - Click this checkbox to allow the user to toggle between the Single Button Connection Manager and the Terminal Connection Manager.



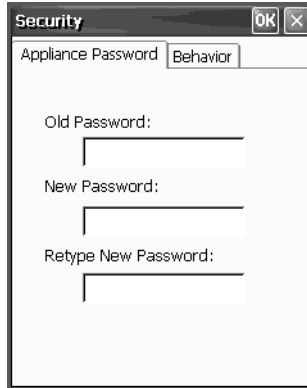
Security

Setting a ThinSTAR password protects the device configuration from unauthorized changes. Click on **Appliance Password Tab** to access the Change Password dialog. If you are setting the password for the first time, leave the Old Password field blank. If you are changing an existing password, you must enter the existing password as well as the new password.

To delete a password, type the old password and don't type a new password.

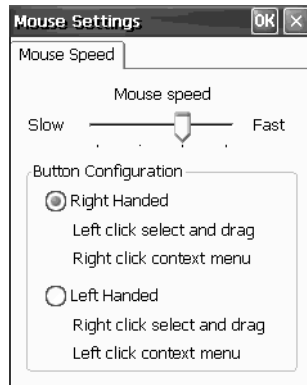
NOTE

Once the ThinSTAR properties are password protected, you must enter the password before you can apply any changes configuration changes.



Mouse Settings

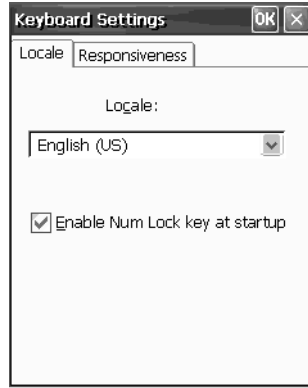
Use the slider to set mouse speed. Choose whether the mouse button support should be right or left handed.



Keyboard Settings

Locale sets the keyboard language of the keyboard attached to the ThinSTAR.

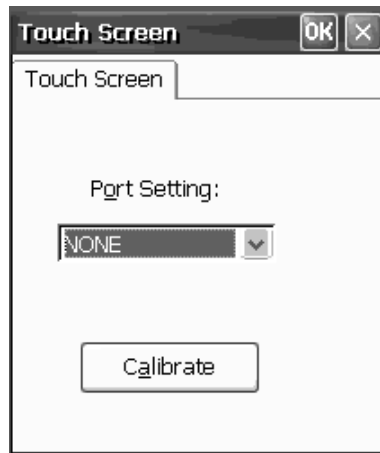
- **Enable Num Lock key at startup** - Forces the Num Lock key to be set on during ThinSTAR startup, if checked.



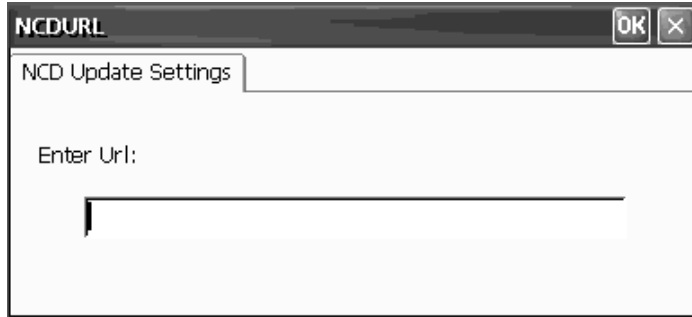
Responsiveness tab controls the Character Repeat: Set the repeat delay and rate for keys held depressed on the keyboard.

Touch Screen

Port setting and access to calibration screen for ELO touch screens.

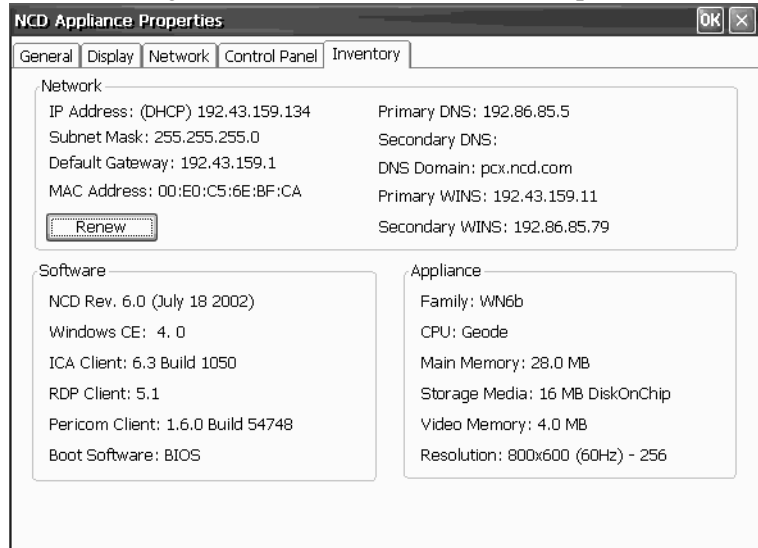


NCD Update Setting Set the URL for NCD ThinPATH Management Server, which provides remote management of the terminal.



The Inventory tab

The Inventory tab displays information about the ThinSTAR's network settings, and its software and hardware specifications.



In the Network section, the subnet mask and default gateway settings are used if the network has multiple subnets. The MAC (Media Access Control) address is the unique hardware identifier for the ThinSTAR's integrated network interface.

In the ThinSTAR section, Main Memory shows the amount of random-access memory (RAM) in the ThinSTAR, and Resolution shows the current screen resolution for your monitor.

Changing the Global ICA Client Settings

You can change settings such as hotkeys and server location for all the ICA connections using the Global ICA Client Settings dialog box. In the NCD Appliance Properties Control Panel tab, click **Global ICA Settings**.

Hotkeys tab

In the Hotkeys tab, you can use the drop-down boxes to customize hotkeys for the ICA connections.

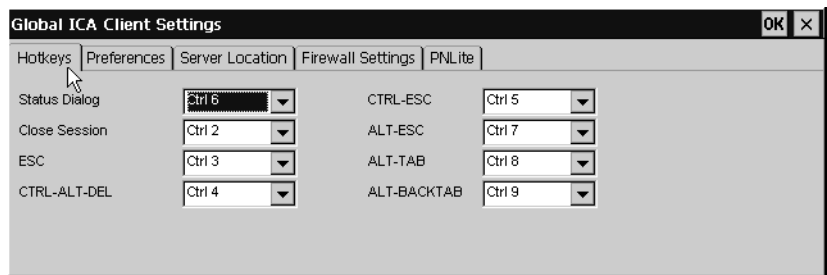


TABLE 1. Default ICA Hotkeys

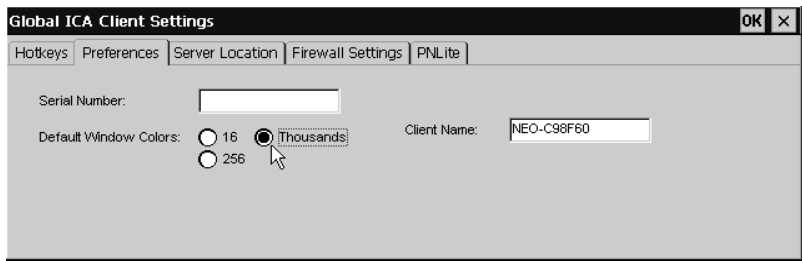
Windows NT Hotkeys	ICA Hotkeys	ICA Function
Status Dialog	CTRL + 6	Displays the connection status.
Close Remote Application	CTRL + 2	Disconnects the connection.
Toggle Title Bar	CTRL + 3	Hides or displays the desktop title bar in the connection.
CTRL + ALT + DEL	CTRL + 4	Displays the connection's Windows NT Security dialog box.

TABLE 1. Default ICA Hotkeys

Windows NT Hotkeys	ICA Hotkeys	ICA Function
CTRL + ESC	CTRL + 5	Displays Task List (WinFrame) or Start menu (MetaFrame).
ALT + ESC	CTRL + 7	Cycles through the windows of applications.
ALT + TAB, ALT + BACKTAB	CTRL + 8 OR 9	Cycle through the applications in the connection.

Preferences tab

You can enter a serial number for the ICA client software, which is needed for servers running Citrix’s WinFrame. You can also enter a unique client name for the ThinSTAR and select the default Windows colors. For PPP connections, 16 colors may provide better performance.



The Client Name set in this dialog is the same as the Appliance Name set on the General tab of the NCD Appliance Properties dialog. (See “Appliance Name” on page 46.)

Note: The Client Name field may not contain the following characters:

\\ : " ; / ~ ' @ # \$ % ^ { } < > * + = | ? , . <space>

Server Location tab

Don't have
MetaFrame XP?

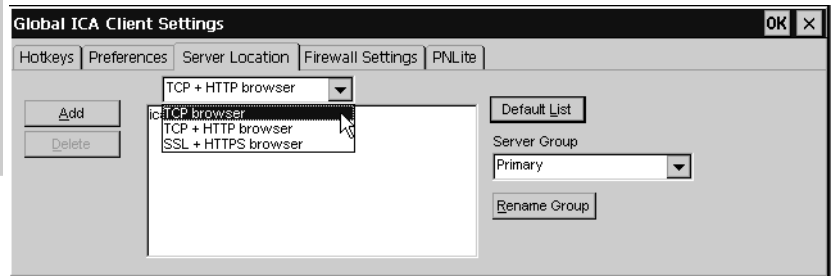
By default, the ICA 6.2 client uses TCP + HTTP browsing, which is the default for MetaFrame XP Master Browsers / Server Farms. If you are using earlier versions of MetaFrame or WinFrame, you should change to "TCP browser."

When you define ICA connections, the ICA Client Setup Wizard uses a broadcast to locate a server configured as an ICA Master Browser server. Since network broadcasts are not routinely transmitted through routers, if the Master Browser is on a subnet different from the ThinSTAR, no list of servers or published applications will appear from which to select.

Tip

If you want to delete all the selected ICA servers and groups, click **Default List**.

Using the Server Location tab, you can add addresses of ICA Master Browser servers on other subnets to make setting up connections easier (selecting from a master list). You can create up to three groups of ICA servers (Primary, Backup 1, and Backup 2).



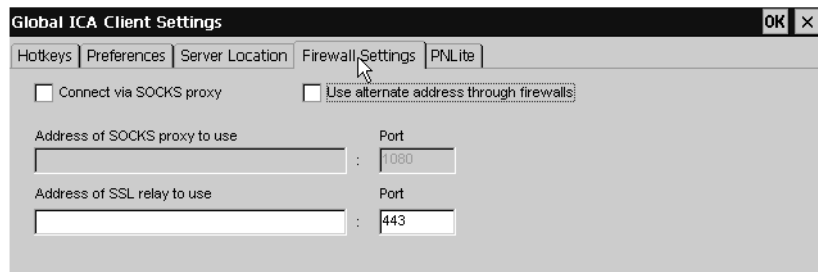
To select a server, first select a server group and then click **Add**. Then type the IP address or DNS name of a Citrix Master Browser server and click **OK**. You can add more servers to this and other groups, delete servers, and prioritize them.

Note: Select **Use HTTP server location** if the firewall restricts UDP broadcasts. This option enables the client to retrieve a list of all Citrix servers on the network and a list of all published applications from a Citrix server that's behind a firewall. Using this setting requires the user to specify the server address and the port to use when you click **Add**.

Firewall Settings tab

You can set the ICA connections to connect through a SOCKS proxy server firewall. First select the Connect via SOCKS proxy checkbox,

and then type the IP address of the SOCKS server. If the port number isn't 1080, type another.



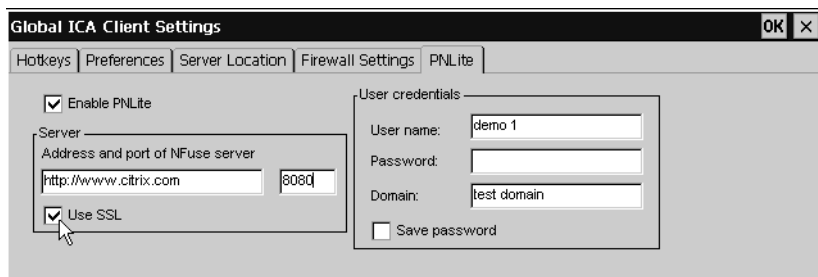
Note: If you select a SOCKS proxy server, you must specify at least one Citrix server in the Server Location tab for server browsing to work. Also, if the ICA client is outside a firewall that uses address remapping, you must select the Use alternate address through firewalls checkbox.

PNLite tab

PNLite allows you to set the ThinSTAR to display only the server connections and published desktops provided from an NFuse server. When enabled, at startup the ThinSTAR prompts for a password (or other appropriate user credential information if not already saved) and then displays only ICA connections and published applications that are made available to the specified user.

Click the Enable PNLite checkbox if you wish to use the ThinSTAR solely as a PNLite device connected to a Citrix NFuse server.

Enter the address and port of the NFuse server, and then enter your user credentials to logon to the server.



Any user credential information not provided on this screen will be prompted-for when the ThinSTAR starts up.

Appendix 5

Using LPR/LPD Printing

This appendix describes how to configure your ThinSTAR for network printing with Windows and UNIX servers.

Network printing using LPR/LPD

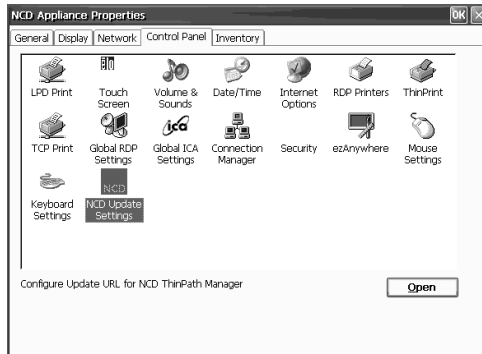
LPR (which stands for "Line Printer Remote" although you can use it with most kinds of printer) is a printing protocol that is part of the TCP/IP protocol suite. LPR allows you to send a print job to a networked computer (or to an LPR-equipped network printer) for handling with other print jobs (the job gets placed in a "print queue"). In order for LPR to work, there must be a receiving device that is running the Line Printer Daemon ("LPD"), the computer utility that is responsible for accepting LPR jobs.

ThinSTARs include LPD for accepting LPR print jobs. Windows NT and Windows 2000 servers can print using LPR, as can UNIX/Linux servers and many mainframes. That means that print jobs can be directed to ThinSTARs from virtually any server operating system. This allows administrators to create network printers for use by anyone using the network, without depending on having an active user session.

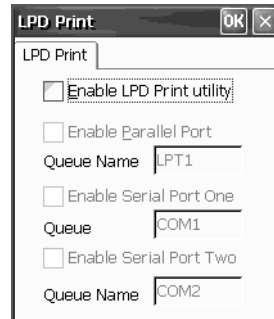
Both the ThinSTAR and the server require configuration to use LPR/LPD. This appendix describes typical configuration settings on ThinSTARs, as well as on Windows and UNIX servers.

Configuring the ThinSTAR for LPR/LPD printing

- 1 Power off the ThinSTAR.
- 2 Connect the printer that is to be networked to a parallel or serial port.
- 3 Power on the ThinSTAR.
- 4 When the Connection Manager appears, press **F2** to access the NCD Appliance Properties dialog.
- 5 Select the LPD Print icon within the Control Panel tab.

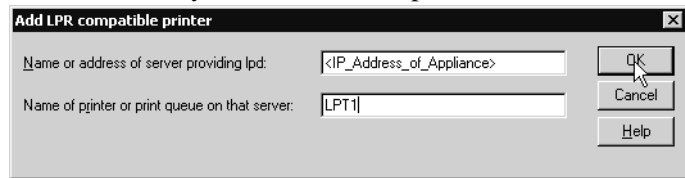


- 6 Check to make sure that LPD is enabled for the port to which you connected the printer. (Select Enable LPD Print Utility if not checked, and make sure checkbox for the port to which you connected the printer is checked.) Click **OK** to close the LPD Print Utility dialog.
- 7 Select the Inventory tab.
- 8 Note the IP address of the ThinSTAR.



Windows 2000 LPR/LPD printing to the ThinSTAR

- 1 On the Windows 2000 server, log in as administrator.
- 2 Open the Printers dialog.
- 3 Select Add Printer.
- 4 Click **Next**, select Local Printer, making sure that the checkbox is NOT checked for Automatically Detect and Install my Plug and Play Printer. Click **Next**.
- 5 Select Create a new port, and scroll down to LPR port. Click **Next**. A dialog will appear for entering information about the device to which you connected the printer.



- 6 On the top line (Name or address of server providing lpd), enter the IP address of the ThinSTAR.
- 7 In the bottom line (Name of printer or print queue on that server), enter the Queue Name of the port to which you attached the printer. For example, if you attached the printer to the parallel port, you would enter the Queue Name "LPT1" (without any punctuation).
- 8 Click **OK**.
- 9 The rest of the printer installation is the same as for any other Windows printer.

Windows NT 4 LPR/LPD printing to the ThinSTAR

- 1 On the Windows NT 4.0 server, log in as administrator.
- 2 Open the Printers dialog.
- 3 Select Add Printer.
- 4 Select My Computer. Click **Next**.

- 5 Select Add Port.
- 6 Select LPR Port. Click **New Port**.
- 7 A dialog will appear. On the top line (Name or address of server providing lpd), enter the IP address of the ThinSTAR.
- 8 In the bottom line (Name of printer on that machine), enter the Queue Name of the port to which you attached the printer. For example, if you attached the printer to the parallel port, you would enter the Queue Name "LPT1" (without any punctuation).
- 9 Click **OK**.
- 10 The rest of the printer installation is the same as for any other Windows printer.

Linux/UNIX LPR/LPD printing to the ThinSTAR

- 1 On the Linux/UNIX server, first log in as administrator (root).
- 2 Edit the /etc/printcap file and add the following section with the appropriate values:

```
<printer name>:\
    :sd=/var/spool/lpd/<port driver>:\
    :mx#0:\
    :sh:\
    :rm=<ip address>:\
    :rp=<remote port>:
```

As an example: For a printer to be named "hp5si," attached to thin client at IP address "10.10.100.13," connected to the parallel port (Queue Name "LPT1"), the entry would be:


```
hp5si:\
      :sd=/var/spool/lpd/hp5si:\
      :mx#0:\
      :sh:\
      :rm=10.10.100.13:\
      :rp=LPT1:
```

3 Save the file.

4 To print from the command line, enter the command:

```
lpr -P <printer name> <name of file to print>
```

Further driver configuration on Linux is left to the customer.

Frequently observed issues

Don't use punctuation When you enter the Queue Name, be sure not to add a colon (:) or any other punctuation. Just use the Queue Name, exactly as it appears in the LPD Printer Utility dialog on the ThinSTAR.

"Printer name" really means Queue Name Although both Windows 2000 and Windows NT 4.0 use the term "name of printer" to prompt for information when defining an LPR printer, the correct entry is the appropriate Queue Name (see above). For example, if you attached the printer to the parallel port, you would enter the Queue Name "LPT1" (without any punctuation).

Index

Numerics

- 10BaseT / 100BaseT Ethernet 6
- 128-bit (RC5) encryption 28

A

- adding a connection 18
- address remapping 64
- ADDS A2 emulation 30
- Advanced button (Host Information dialog box)
 - Terminal Emulation connections 33
- ANSI BBS emulation 30
- audio
 - ICA connections 27
- Auto Line Feed 36
- auto-locating servers 24
- Automatic Login
 - Terminal Emulation connections 35
- automatic logon
 - RDP connections 21
 - Windows connections 40
- Automatic terminal configuration 11
- Automatically restart disconnected sessions 56
- Autostart connections 56
- autostart connections
 - deselecting 40
 - selecting 40
- Auxiliary devices
 - Terminal Emulation connections 36

B

- back panel connections 4
 - mouse devices 4
 - power jack 4
- bar code scanners 4, 6

C

- carriage return, in terminal emulations 33
- CDS (Citrix Device Services) 2, 18
- Citrix Device Services. See CDS.
- Citrix ICA Client 23
- Client name
 - disallowed characters in name 62
- Client Name box
 - global ICA client settings 62
- client printers
 - defined 42
- closing connections 42
- color depth
 - ICA connections 26
- COM ports 4
- command bar (terminal emulations) 43
- command line
 - application autostart
 - ICA connections 26
- Compress Data Stream setting 27
- Configure tab
 - adding connections 19
 - hiding 56

Index

- selecting startup options 40
 - connecting
 - back panel ports 4
 - modems 6
 - monitors 6
 - network cables 6
 - peripherals 4
 - printers 4, 6
 - connecting cables and monitor 4
 - connection
 - adding 18
 - connection autostart
 - PPP/RAS connections 30
 - connection properties
 - changing 41
 - resetting 46
 - setting
 - ICA connections 23
 - Pericom Terminal Emulation connections 30
 - PPP/RAS connections 28
 - RDP connections 20
 - startup options 40
 - connection type
 - Terminal Emulation connections 32
 - connections
 - auto-restart 56
 - autostart
 - individual 40
 - changing properties 41
 - Citrix ICA client 23
 - closing 42
 - default 40
 - deleting 41
 - dial-in 23, 33
 - disconnecting 42, 61
 - displaying i, 39
 - displaying status dialog 61
 - editing 41
 - ICA 23
 - logging off 42
 - naming
 - changing names 41
 - RDP 21
 - Pericom Terminal Emulation 30
 - PPP/RAS 28
 - RDP 20
 - selecting startup options 40
 - starting 39, 43
 - switching between 41
 - Connections tab
 - starting a connection 39
 - starting a terminal emulation connection 43
 - switching between connections 41
 - CTRL + 2 61
 - CTRL + 3 61
 - CTRL + 4 61
 - CTRL + 5 62
 - CTRL + 6 61
 - CTRL + 7 62
 - CTRL + 8 or 9 62
 - CTRL + ALT + END i, 41
 - CTRL + ALT + HOME i, 41
 - CTRL + ALT + UP or DOWN arrow keys i, 41
 - cutting and pasting 41
- ## D
- data compression
 - ICA connections 27
 - DEC VT100 emulation 30
 - DEC VT300 7-bit and 8-bit emulation 30
 - DEC VT52 emulation 30
 - default connection
 - defined 40
 - displaying 41
 - selecting 40
 - Default Gateway 61
 - Default List button 63
 - Definitions list 35
 - deleting connections 41
 - Desktop Area
 - Setup Wizard 14
 - ThinSTAR Properties 47
 - desktop title bar, hiding and displaying 61
 - Device Properties dialog box 25
 - DHCP (Dynamic Host Configuration Protocol)
 - changing configuration 48
 - initial terminal configuration 12
-

- no server response 15
- dial-in connections 23
 - using ICA 24
 - using terminal emulations 33
- disconnecting
 - RDP and ICA connections 42
 - terminal emulations 43
 - using a key combination 61
- Display tab (ThinSTAR Properties) 47
- displaying
 - connections i
 - default connection i, 41
 - Terminal Connection Manager i
 - terminal properties i
- DNS (Domain Name Service)
 - defined 13
 - Setup wizard 13
 - Terminal Properties 49
- DNS (Domain Name Service) address server 21

E

- echo, suppressing 33
- edit mode, overstrike or insert (terminal emulations) 43
- editing connections 41
- Embedded Web Browser setup 14
- Enable Sound setting 27
- Encryption
 - ICA connections 27, 28
- Encryption Level 28
- EOR options (terminal emulations) 33
- Ethernet connector 6

F

- F2 Key i, 45
- Factory default settings 46
- Firewall Settings
 - ICA connections 28
- Force Negotiation settings 33
- FormFeed Terminator 36

G

- gateway setting 13

- global settings. See ICA.
- GUI Overrides dialog box 36

H

- Hazeltine HZ1500 emulation 30
- Host Information
 - Terminal Emulation connections 32
- Host Name
 - Terminal Emulation connections 33
- HP70092 emulation 30

I

- IBM 315 emulation 30
- IBM 5250 emulation 31
- ICA (Independent Computing Architecture) 23
 - address remapping 64
 - application autostart
 - command line 26
 - audio settings 27
 - color depth 26
 - connection 23
 - creating a connection 23
 - cutting and pasting between connections 41
 - data compression 27
 - default key combinations 61
 - dial-in connections 24
 - encryption settings 27, 28
 - explained 18
 - Firewall Settings 28
 - global settings 61
 - logon information 26
 - network connection 23
 - null-modem serial port connections 25
 - port number 64
 - printing 42
 - printing utility 27
 - published applications 23, 28
 - server groups 63
 - server location
 - global setting 63
 - individual ICA connection 24
 - SOCKS proxy servers 64
 - SpeedScreen settings 27, 28
 - working directory 26

Index

- ICA printing 42
- Internet Explorer 2
- Internet help pages 2
- Inventory tab (Terminal Properties) 60
- IP (Internet Protocol) address
 - client
 - changing 48
 - initial configuration 12
 - defined 12
 - DHCP supplied 12
 - server 21
 - static 12

K

- keyboard
 - connecting 4
 - KB port
 - location 4
- keyboards
 - connecting 4
 - macros for IBM 5250 emulation 31

L

- LAN 4
- Line Printer Remote 67
- Locking down the terminal 56
- logging off 42
- login Information
 - PPP/RAS connections 30
- logon information
 - ICA connections 26
- LPD 67
- LPD Print Utility 68
- LPR 36, 67

M

- MAC address 61
- MetaFrame 23
- Microsoft Remote Desktop Client 20
- modem
 - PPP/RAS connections 29
- Modem Settings
 - Terminal Emulation connections 34
- modems 4

- connecting 6
 - ICA connections 23, 25
- Monitor port 4
- monitors
 - connecting 6
- mouse devices
 - PS/2 type 4

N

- name 39
- NCD
 - Setup wizard 12
 - technical support 2
 - Web site 2
- network activity LED indicator 7
- network printers 42
 - terminal emulations(LPR) 36
- Network section (Inventory tab) 61
- Network Speed 48
- Network tab (Terminal Properties) 48
- null-modem serial port connections
 - ICA connections 25
 - Terminal Emulation connections 34

O

- on/off switch
 - using 7
- overstrike or insert (terminal emulations) 43

P

- parallel port
 - ICA connections 42
 - selecting as local printer for terminal emulations 36
- password protection 57
- Pericom Terminal Emulation
 - creating a connection 30
- Pericom Terminal Emulation Client 31
- Pericom Terminal Emulations
 - Advanced button (Host Information dialog box) 33
 - Automatic Login 35
 - Auxiliary devices 36
 - connection type 32

- echo suppression 33
- Force Negotiation settings 33
- GUI Overrides 36
- Host Information 32
- Host Name 33
- Modem Settings 34
- null-modem serial port connections 34
- printing 36
 - client printer 36
 - selecting a Telnet port 33
 - Telnet name 33
- peripheral devices 6
- personal digital assistants (PDAs) 4
- Per-User Time Zone Support 51
- Ping Utility 49
- port number 64
- power adapters 6
- power indicator LED 7
- power supply 6
- PPP (Point to Point Protocol)
 - creating a connection 28
- PPP (Point to Point Protocol)/ RAS (Remote Access Server)
 - connection autostart 30
 - Login Information 30
 - modem 29
 - device properties 29
 - Security 29
 - TCP/IP settings 29
 - telephone number 30
- printer configuration utility, ICA connections 27
- printer status, in terminal emulations 43
- Printers (Terminal Properties)
 - make Default 53
 - Manufacturers 53
 - Model 53
 - Network Print Utilities 54
 - LPD Settings 54
 - TCP Print Settings 54
- Printers tab (Terminal Properties) 50
- printing
 - client printer
 - Terminal Emulation connections 36
 - connecting printers 6
 - from RDP and ICA connections 42
 - local printing in a RDP session 42, 50
 - local printing in an ICA session 42
 - network printers 42
 - parallel port 4
 - serial port 4
 - Terminal Emulation connections 36
 - terminal emulations 42
 - product ID number (ThinSTAR) 46
 - Properties dialog box 41
 - protocols
 - ICA 23
 - PPP/RAS 28
 - RDP 20
 - PS/2 mouse 4
 - published applications (ICA) 23, 28
- Q**
 - Queue Name 69, 70, 71
- R**
 - RAM (random-access memory) 61
 - RC5 encryption 28
 - RDP (Remote Desktop Protocol)
 - application connection 22
 - creating a connection 20
 - desktop connection 22
 - explained 18
 - printing 42
 - working directory 23
 - RDP Local Printers 52
 - RDP printing 50
 - Refresh Frequency
 - setting
 - using the Setup wizard 14
 - refresh frequency
 - default setting 14
 - setting
 - using the ThinSTAR Properties dialog box 47
 - Remote Desktop Protocol. See RDP. 42
 - resetting
 - how to 46

Index

- Setup wizard appears 12
- Resolution
 - setting
 - using the Setup Wizard 14
- resolution
 - default setting 14
 - setting
 - using the ThinSTAR Properties dialog box 47
 - viewing 61
- Respond With setting 35
- RJ-45 Ethernet jack 4

S

- SCO Console emulation 31
- Screen Resolution 14, 47, 61
- Screen Saver 47
- scrolling, in terminal emulations 43
- SecureICA 28
- serial number (WinFrame clients) 62
- Serial port
 - location 4
- serial ports 4
 - configuring
 - ICA connections 25
 - terminal emulations 34, 36
 - ICA connections 42
- server groups 63
- server location (ICA) 24
- Setup wizard
 - preliminaries 11
 - using 12
- single button connection manager 40, 57
- SOCKS proxy servers 64
- soft buttons (terminal emulations) 43
- SpeedScreen
 - ICA connections 27, 28
- Start menu 42, 62
- startup connection options 40
- status bar, in terminal emulations 43
- Subnet Mask 61
- subnet mask setting 13
- Suppress Echo setting 33

T

- Tandem 6530 emulation 31
- Task List (WinFrame) 62
- TEC (terminal emulation connection) 43
- technical support 2
- telephone number
 - PPP/RAS connections 30
- Televideo TVI910, TVI920 emulation 31
- Telnet connections 33
- Telnet Name setting 33
- Terminal Connection Manager
 - Configure tab 19, 40
 - Connections tab 39
 - displaying i, 18, 39
 - editing and deleting connections 41
 - starting connections 39, 43
- Terminal Emulation User's Guide 30
- terminal emulations
 - command bar 43
 - dial-in connections 33
 - edit mode 43
 - printer status 43
 - printing 42
 - scrolling 43
 - soft buttons 43
 - status bar 43
- Terminal Name box
 - disallowed characters in name 47
- Terminal properties
 - Connection Manager Settings 57
 - Enable F5 toggle key 57
 - Enable Single button view 57
 - single button connection manager 57
 - displaying i
 - initial configuration 11
 - Inventory tab 60
 - password 57
 - printers 50
 - make default 53
 - manufacturers 53
 - model 53
 - Network Print Utilities 54
 - LPD Settings 54

- TCP Print Settings 54
- web
 - dialup information 52
 - enable favorites 52
 - preferences 52
 - proxy information 52
 - search page 51
- Terminal section (Inventory tab) 61
- ThinSTAR
 - front panel 7
 - on/off switch
 - location 7
 - password protection 57
 - product ID number 46
 - resetting 46
 - turning on of off 7
 - unpacking 3
- ThinSTAR properties
 - changing settings 45
 - displaying 45
 - resetting 46
- ThinSTAR Properties dialog box 45
- Time Settings 51
- timing mark, in terminal emulations 33
- Touch screen
 - calibration 59
 - setting the port 59
- turning on and off 7

U

- USB ports, locating 4
- Use alternate address through firewalls
 - checkbox 64

V

- volume 50

W

- Wait For setting 35
- Waiting for DHCP Response dialog box 15
- Web (Terminal Properties)
 - Dialup Information 52
 - Enable Favorites 52
 - Preferences 52
 - Proxy Information 52
 - Search Page 51
- wide-area networks (WANs)
 - data compression 27
- Windows 2000 Server
 - requirement on server(s) 2
- Windows NT Security dialog box 61
- Windows NT Server
 - requirement on server(s) 2
- WinFrame 2, 23
- WINS (Windows Internet Name Service) address server 21
- WINS (Windows Internet Naming Service)
 - defined 13
 - Setup wizard 13
 - Terminal Properties 49
- Work Area 9
- working directory
 - ICA connections 26
 - RDP connections 23
- WYSE WY50, WY50+, WY60 emulation 31

