

NCD ThinPATH™ Desktop Mirror

Remote Support for Your Enterprise Desktops

Only NCD offers a solution that remotely mirrors an entire thin client desktop over your TCP/IP network. NCD ThinPATH Desktop Mirror shares RDP or ICA sessions, terminal emulation sessions and set-up screens between NT Servers, PCs and/or NCD ThinSTAR Windows-based Terminals.

Highlights

- Compatible with multiple session protocols including ICA, RDP, and X Windows
- Shares the complete desktop including terminal properties screens on the NCD ThinSTAR WBT
- Supports TCP/IP and WAN networks
- Multi-level security process protects desktops from unauthorized access
- Accommodates differences between console and desktop display and keyboard configurations
- Remotely manages and shadows unattended desktops with a central access password
- Simple to install, use, and configure using NCD and Microsoft NT thin client architectures

Mirror desktop activity from PCs and Windows-based Terminals to your desktop

Deploying personnel to support and configure individual desktop devices throughout your enterprise is costly and inefficient. A solution is needed that enables remote, centralized desktop support for Terminal Server Edition installations. NCD ThinPATH Desktop Mirror provides this support by enabling individual desktops to be viewed and manipulated through mouse and keyboard input by one or several remote users. This NCD solution is unique to the market in that the complete desktop can be shared regardless of the type of information being presented. For example, the remote viewer can see ICA and RDP sessions, as well as, the low-level hardware set-up screens on the NCD ThinSTAR Windows-based Terminal. This makes NCD ThinPATH Desktop Mirror the perfect support solution for help-desk, classroom and kiosk environments. Other shadowing solutions are limited to the display of only remote Windows sessions, not the entire desktop environment.

More network connectivity with minimum network traffic

NCD ThinPATH Desktop Mirror supports Windows NT Server 4.0, NT Workstation 4.0, Windows 95 and Windows 98 PC desktops along with NCD's family of ThinSTAR Windows-based Terminals. While providing robust, remote support for networked desktops for applications such as technical support, training, and remote administration, ThinPATH Desktop Mirror also minimizes incremental network traffic by controlling the transfer of data packets. This ensures that the traffic generated by the mirroring process has minimal impact on the productivity of other networked end users.

Controlling the number of screen updates sent from the desktop to the viewer program reduces data traffic, and NCD ThinPATH Desktop Mirror also compresses the data it sends over the network.

Increase network productivity

NCD ThinPATH Desktop Mirror gives customers a cost-effective way to:

- Provide help desk support remotely and without hands-on visits
- Use a centralized training environment that shares a common desktop with all participants
- Maintain and configure kiosks from remote locations
- Support remote customers of Application Service Providers (ASP)
- Create and review documents with team members from their own desks
- Give presentations without using a meeting room

The NCD ThinPATH Software Family

NCD ThinPATH Desktop Mirror is a member of the NCD ThinPATH Software family. NCD ThinPATH Software provides enhanced functionality and flexibility for Microsoft Windows NT Server 4.0, Terminal Server Edition from PCs and NCD ThinSTAR Windows-based Terminals. The NCD ThinPATH Software family is comprised of Management, Desktop Support, and Emulation modules. NCD ThinPATH Software offers a robust, low-cost Terminal Server solution. NCD ThinPATH Software is predicated on NCD's decade of experience in meeting customer needs with industry-leading hardware and software technology.

World-class technical support

NCD and NCD Technology Certified Resellers provide a decade of experience in thin client computing. Backed by formal service agreements with Microsoft® and Citrix®, a wide range of services that cover the entire thin client environment are available.



Management

Desktop Support

Emulation

NCD ThinPATH Manager
 NCD ThinPATH Load Balancing
NCD ThinPATH Desktop Mirror
 NCD ThinPATH Plus
 NCD ThinPATH Connect
 NCD ThinPATH X Windows
 NCD ThinPATH Xware

NCD ThinPATH™ Desktop Mirror

Technical Specifications

Features

- Access NCD ThinSTARs and PCs from anywhere
- Full access to desktops from remote help desks
- Enables remote management of unattended kiosks
- Share instructor desktop concurrently with multiple students
- Desktop security configuration options
- Minimum user desktop performance impact
- No desktop connection to Terminal Server Edition needed for client being viewed

Requirements

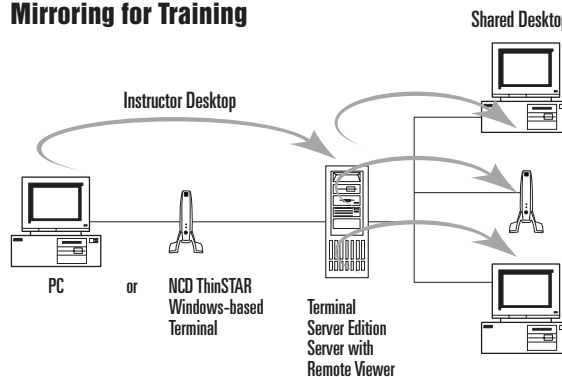
Server

- Server with Microsoft Windows NT Server 4.0, Terminal Server Edition
- NCD ThinPATH Desktop Mirror software installed on the NT server

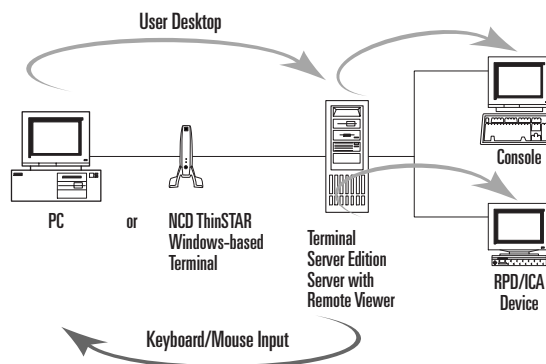
Desktop

- PCs utilizing Windows NT Workstation 4.0, Windows 98 or Windows 95
- NCD ThinSTAR Windows-based Terminals with 16MB RAM
- TCP/IP network connection to NT Server Host

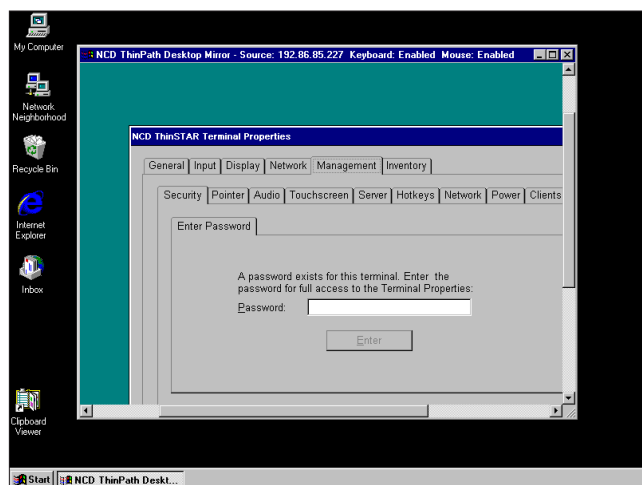
Mirroring for Training



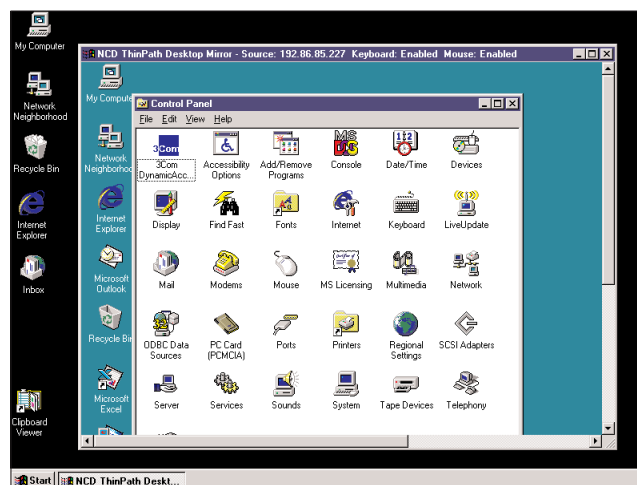
Remote Help Desk



Remote Access to NCD ThinSTAR local configuration



Remote Access to PC Desktop



Corporate Headquarters

Network Computing Devices, Inc.
 350 North Bernardo Avenue
 Mountain View, California 94043
 Tel: 650-694-0650
 Fax: 650-961-7711
 Web: www.ncd.com

For More Information

North America 800-800-9599	Germany 49-89-4587-2820
Australia 61-29-808-5455	Japan 81-3-3449-8151
Canada 905-501-1800	Sweden 46-18-601080
France 33-1-34-58-21-21	United Kingdom 44-1491-848313